

Government of Telangana



# KantiveLugu 2023

**District**

**BHADRADRI  
KOTHAGUDEM**

**Health, Medical & Family Welfare Department, Telangana State**

# Index

<b>Message by Hon'ble Chief Minister of Telangana State</b>	<b>01</b>
<b>Message by Hon'ble Health Minister of Telangana State</b>	<b>03</b>
<b>Master Circular</b>	<b>05-12</b>
<b>G.O.s and Circulars Issued</b>	<b>13-15</b>
<b>1. G.O.Rt.No. 712</b>	
<b>2. G.O.Rt.No. 408</b>	
<b>3. G.O.Rt.No. 779</b>	
<b>District Schedule - BHADRADRI KOTHAGUEM</b>	<b>17-30</b>





# సందేశం

తెలంగాణ రాష్ట్ర ప్రజలందరికీ నూతన సంవత్సర శుభాకాంక్షలతో...

‘సర్వేంద్రియానాం నయనం ప్రధానం’ అన్న దృక్పథం కలిగిన మన రాష్ట్ర ప్రభుత్వం నివారించగలిగే అంధత్వంతో బాధపడుతూ రంగుల ప్రపంచాన్ని ఆస్వాదించలేని ప్రజల కోసం “కంటివెలుగు” కార్యక్రమం రూపొందించింది. 18 జనవరి, 2023 నుండి 100 పని దినాలలో పూర్తి చేయాలని నిర్ణయించాం. ఈ కార్యక్రమంలో 1500 బృందాల ద్వారా ప్రత్యేక శిబిరాలను ఏర్పాటు చేస్తున్నాం.

ముందస్తు ప్రణాళికలతో అన్ని గ్రామాలలో, అన్ని పట్టణాలలో ప్రతి వార్డులో వైద్యనిపుణులచే కంటి పరీక్షలు చేపట్టి, అవసరమైన వారికి ఉచితంగా మందులు, కంటి అద్దాలను అందించడం జరుగుతుంది.

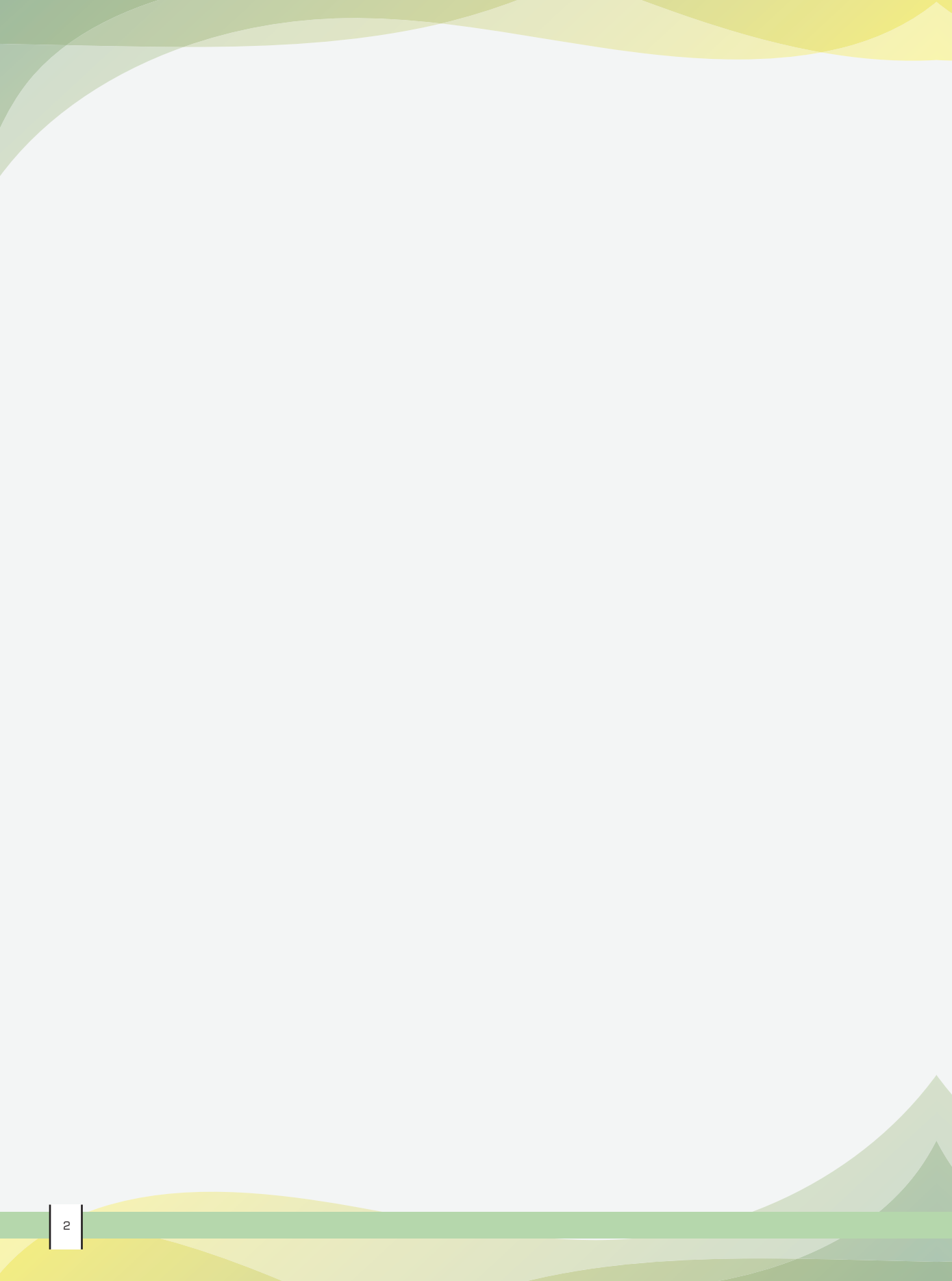
తెలంగాణ ప్రజలు ఈ సదవకాశాన్ని సద్వినియోగం చేసుకుంటారని మనస్ఫూర్తిగా ఆశిస్తూ...

అభినందనలతో..

మీ

**కల్వకుంట్ల చంద్రశేఖర రావు**

రాష్ట్ర ముఖ్యమంత్రివర్గులు  
తెలంగాణ





## సందేశం

తెలంగాణ రాష్ట్ర ప్రజలందరికీ నూతన సంవత్సర శుభాకాంక్షలతో..

నివారించగలిగే అంధత్వాన్ని రూపుమాపడానికి రూపొందించిన బృహత్ కార్యక్రమం “కంటివెలుగు”. ఇందులో భాగంగా రాష్ట్ర వ్యాప్తంగా ప్రత్యేక శిబిరాలను ఏర్పాటుచేసి, కంటికి సంబంధించిన పరీక్షలు చేసి, అవసరమైన మందులు, కళ్ళద్దాలను ఉచితంగా పంపిణీ చేసేందుకు గౌరవ రాష్ట్ర ముఖ్యమంత్రివర్యులు శ్రీ కల్వకుంట్ల చంద్రశేఖర రావు గారు 18 జనవరి, 2023 నాడు ఈ “కంటివెలుగు” కార్యక్రమాన్ని ప్రారంభిస్తున్నారని తెలుపుటకు సంతోషిస్తున్నాను.

ఈ కార్యక్రమం పంచాయితీరాజ్, గ్రామీణాభివృద్ధి మరియు పట్టణాభివృద్ధి శాఖల సహకారంతో గ్రామాలు, పట్టణాలలో శిబిరాలు నిర్వహిస్తారు. రాష్ట్రవ్యాప్తంగా 1500 బృందాల ద్వారా వైద్యులచే కంప్యూటరైజ్డ్ కంటి పరీక్ష నిర్వహించే ఈ “కంటివెలుగు” కార్యక్రమాన్ని సద్వినియోగం చేసుకొని అవసరమయినవారు మందులు, కళ్ళద్దాలు ఉచితంగా తీసుకోవలసిందిగా కోరుతున్నాను.

తెలంగాణ ప్రజలందరూ మంచి దృష్టిని పొంది, తమ జీవితాలలో వెలుగులను నింపుకొనే విషయంలో దృష్టి కేంద్రీకరిస్తారని ఆశిస్తూ,

ఆరోగ్య తెలంగాణ దిశలో వేగంగా అడుగులు వేస్తూ...

అభినందనలతో

మీ

**తన్నీరు హాల్స్ రావు**

ఆర్థిక, ఆరోగ్య, వైద్య మరియు కుటుంబ సంక్షేమ శాఖామాత్యులు

తెలంగాణ



## Kanti Velugu Programme Guidelines

To work towards “Avoidable Blindness Free Telangana”, Kanti Velugu will be launched by the Hon’ble Chief Minister of Telangana on 18.01.2023. The universal adult population eye screening for vision problems will be conducted at the village/ ward level through 1500 teams for 100 working days. To ensure smooth conduct of the program and effective service to all, following instructions are issued:

### Role of District Collector:

District Collector is the overall head of the program and shall be responsible for planning, implementation, and monitoring.

### Objectives of the Program:

- I. To conduct eye screening & vision test for entire adult population.
- II. To provide spectacles free of cost wherever prescribed.
- III. To provide medicines for common eye ailments.
- IV. To educate people on prevention of serious disabling eye diseases

### Preparatory activities to be done at District level:

1. Unit for planning- The unit for planning will be PHC/ UPHC. In other words, the teams will be allocated to the PHC/ UPHC and the schedule will be made for each of the teams such that the entire adult population in each ward/ GP will be covered in 100 days.

Proper mobilization must be done in coordination with the PR and MAUD departments to ensure that there is uniform daily arrival at the camp. It should be ensured that requisite number of people are screened per day at the camps by suitable intimation and mobilization at the GP / ward level so as to complete entire programme in 100 working days.

### 2. Manpower and Logistics:

- i. Teams shall be constituted with the following members:

S. No	Team Member	Number of individuals
1	Medical Officer	1
2	PMOO/Optomtrist	1
3	CHO/HE/MPHEO/PHN/MPHS(M&F)/DPMO/APMO etc	2



4	MPHA(F)(ANM)	2
5	Data Entry Operator	1
6	ASHA	3

- ii. Medical Officers shall be deputed from the existing staff. First preference will be given to newly recruited CAS followed by MLHPs and RBSK doctors. It must be ensured that every PHC has at least 1 MO and the routine functioning of PHCs is not affected.
- iii. PMOO and DEO shall be taken on outsourcing basis by the District Selection Committee.
- iv. The Supervisory staff, ANM and ASHA will be allocated to the team by the PHC/UPHC MO from the area in which the camp is being conducted.
- v. Buffer teams: 5 % Buffer Teams of MO and PMOO should be maintained at district level, in case of any unforeseen incidences.
- vi. Each team shall be given a hired vehicle.
- vii. The team members should be provided with comfortable accommodation for night stay at the camp location. If the accommodation is not available in the villages, it should be provided in the nearby towns. A contingency amount of Rs. 1500/- per day is being provided to every camp for food and accommodation.

### **3. Camp Site Arrangements:**

- i. Camps should be planned only for 5 days in a week. Camps shall not be conducted on Saturdays, Sundays, or Public Holidays
- ii. The camp location shall be decided by the Municipal Commissioner / DPO in consultation with DMHOs and PHC/UPHC Medical Officers. Preference should be given to centrally located government buildings.
- iii. For the convenience of patients, it should be ensured that shamiyanas, chairs, tables, drinking water and electricity supply are available at the camp site. The logistics should be arranged by the GP officials in rural areas and municipal commissioners in urban areas.
- iv. GP/ ULB staff shall be involved in queue maintenance in coordination with local police.

### **4. Scheduling and Mobilization:**

- i. Camp schedules (GP/ward wise dates) and allotment of MO & Optometrist to each camp/ team will be uploaded by the DM&HO, using the software hosted at **[Kanti Veluqu.telangana.gov.in](http://Kanti.Veluqu.telangana.gov.in)**.
- ii. The Medical Officer in turn will assign other members of the team like ASHAs, ANMs

and Supervisors etc. Edit option will be given to District Collector/ DMHO to revise the schedule based on local contingencies.

- iii. It should be ensured that requisite daily mobilization of people is done for screening so as to complete screening of all target population in 100 working days.
- iv. Mobilisation shall be the responsibility of the SHG/SLF and they shall visit every household to ensure their screening.

#### 5. Roles and Responsibilities:

At DMHO Office :

A District Program Management Unit (DPMU) shall be established under the DMHO to be staffed by the officers selected by DMHO. Further a control room shall also be established at DMHO office with one senior officer to monitor the daily reports including starting of camps, daily completion of target, allocation of buffer teams in contingency situations etc.

At PHCs / UPHCs :

S. no.	Staff Member	Responsibilities
1	Medical Officer, PHC/UPHC	<ul style="list-style-type: none"> <li>a) Overall responsibility to conduct camp</li> <li>b) To schedule camps, ensure micro-planning and coverage of all population in all villages.</li> <li>c) To conduct meeting with public representatives and provide wide publicity about camp dates</li> <li>d) To ensure all staff are trained in Kanti Velugu methodology.</li> <li>e) To ensure food and accommodation is available for the teams at the camp location.</li> <li>f) To conduct mandal level meetings with public representatives give publicity about camp schedule and mobilization</li> </ul>
2	Camp Medical Officer	<ul style="list-style-type: none"> <li>a) Lead the camp at the location</li> <li>b) To ensure that the entire team conducts screening from 9:00 am to 4:00 pm.</li> <li>c) To conduct medical examination including medical history and issue medicines.</li> </ul>
3	Community Health Officer/ MPHEO/PHN/ Supervisor	<ul style="list-style-type: none"> <li>a) To coordinate with Panchyat Secretary / Municipal Commission secure the camp location and ensure arrangements such as shamiyanas, chairs, water arrangement, display of IEC and signages etc are in place.</li> </ul>

		b) To ensure that tea, snacks, and meals are provided to the team at the location c) To manage queue lines
4	PMOO/ Optometrist	a) To conduct objective/subjective refraction through AR machine/ Trial Lens box and prescribe glasses or issue reading glasses.
5	ANM	a) To give wide publicity about the program and conducting village level meetings with public representatives b) To assisting MO, Online recording/data entry and reporting on tablet
6	Data Entry Operator	a) To assist the team in data entry. b) Syncing of Data daily
7	ASHA	a) To mobilize & conduct preliminary screening

#### 6. Kanti Velugu Kit at Campsite:

Kanti Velugu kit: Kanti Velugu kits shall be supplied to DMHOs. DMHOs shall ensure that the material is stored properly and distributed one week before to the PHC/ UPHC. The following equipment shall be positioned with each team, which will be supplied to the districts.

- I. Torch
- II. Tape
- III. Vision/Snellens' Charts
- IV. Trial lens sets
- V. Auto-Refractometer
- VI. Spectacles
- VII. Mirrors
- VIII. Tabs
- IX. Medicines to be made available at the campsite:
  - a. Antibiotic Eye Drops/Ointments
  - b. Vitamin-A tablets
  - c. Paracetamol Tablet
  - d. B-complex tablets
  - e. Anti-inflammatory eyedrops/ tablets
  - f. Eye lubricants
  - g. Steroid eye drops

7. **Data entry arrangements:**

The entire program of screening will be conducted online through the software right from camp scheduling, formation of teams, registration of patients, distribution of spectacles, follow up etc.

The following arrangements are to be ensured at camp level:

- i. The Kanti Velugu App to be downloaded in the tab and tested.
- ii. The app entry will be at two locations - at medical officers' desk (by ANM) and optometrist desk (by DEO).
- iii. At the medical officer desk, registration and preliminary screening is done. At the optometrist desk, refractive errors etc. are entered.
- iv. A DEO shall be hired by DMHOs to assist the team in data entry. Services of ANMs who are well versed in data entry of KCR Kit, NCD etc can be taken.
- v. Data capture is offline which must be uploaded every day.

8. **Layout & work flow in the camp:**

Layout and workflow is enclosed in Annexure I. There must be no deviation from the prescribed layout.

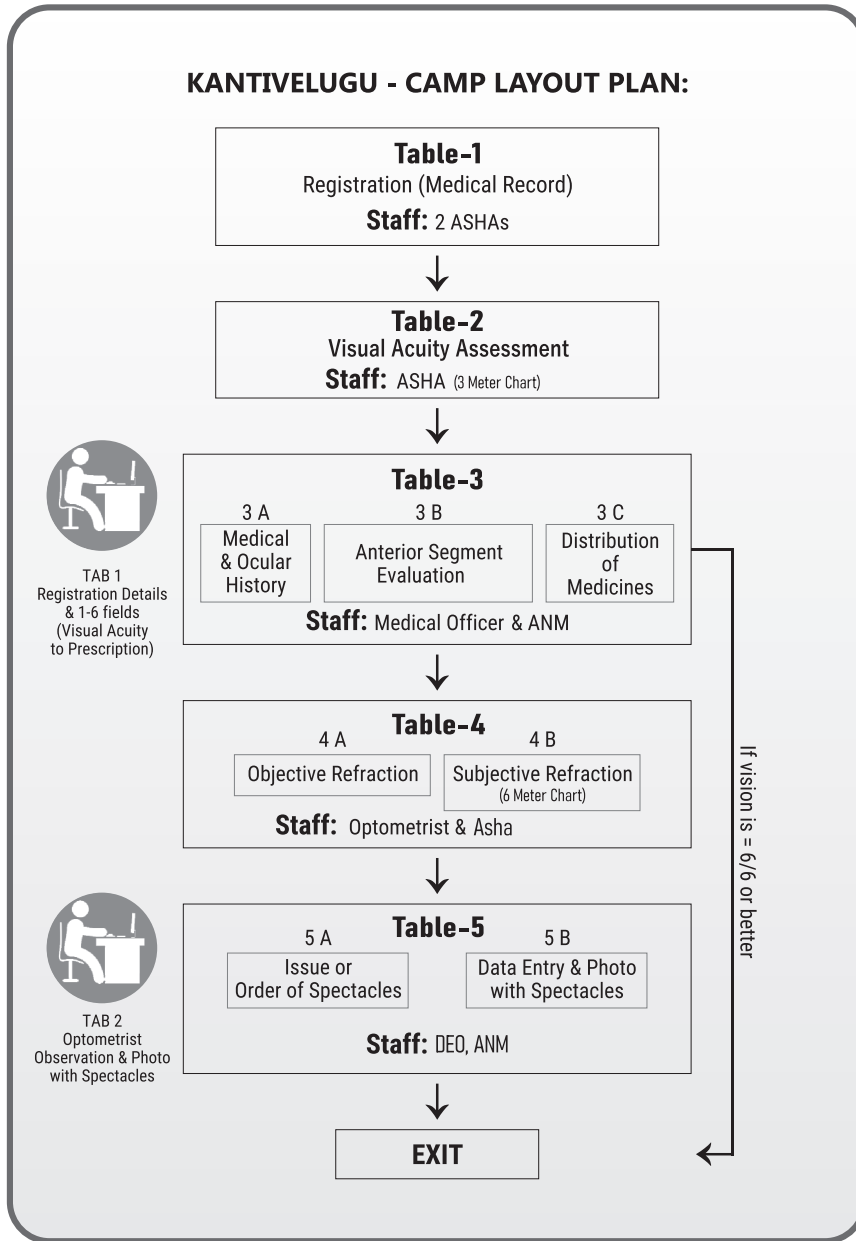
9. **Quality Control Teams:** Quality Control teams have been allocated at the district level. District Collector shall issue a visit schedule for their visit and the teams shall ensure that quality of screening is maintained. A vehicle shall be hired for their utilization.

10. **Involvement of Public Representatives:** The public representatives should be fully involved in the programme. Their participation will be crucial for awareness building, mobilization and success of this programme. Meetings should be conducted at different levels to orient all Public Representatives towards the program, mobilize people to attend the camps and give wide publicity about the benefits.

- i. District level meetings to be conducted by District Collector involving MPs, ZP Chairpersons, MLAs, MLCs, Municipal Chairpersons and all concerned officers.
- ii. Mandal Level meetings to be conducted by PHC MO and MPDO for all Mandal level public representatives and concerned officers.
- iii. Gram Panchayat level meetings involving Ward Members, Village Health and Sanitation Committee Members and concerned officers.
- iv. Municipal Corporation/ Municipality level meetings with the Commissioners, Municipal chairpersons, ward members etc.

An indicative check list for preparatory activities to be completed at the district level is at Annexure II

## ANNEXURE-I



- i. **Table 1 : Registration** : Manual individual registration of patient details will be done here. Each person will be provided an “Eye Screening Medical Record.”

ii. **Table 2 : Unaided Visual Acuity :** An ASHA will carry out basic eye screening by using reduced Snellens Charts and near visual acuity.

iii. **Table 3 : Doctor examination :**

A Team consisting of Medical Officer assisted by ANM will examine the patients and if any emdicines are required, the prescription will be issued and medicines will be dispensed.

**Data entry level 1 :** ANM assisting the Medical Officer shall enter the data until this stage.

iv. **Table-4 :** Refraction testing shall be done through AR machine / trial lens box through PMOO/Optometrlist assisted by ASHA.

v. **Table 5 :** Issue or Order of Spectacles and Data Entry

a) Issuing of reading glasses on the same day. Prescription spectacles would be issued at a later date-as they have to be custome made.

b) ANM will be allocated for spectacle distribution / order and for data entry.

Data entry Level 2 : Optometrist observations and a photograph of the person with spectacles will be captured here using a tablet PC based application. The DEO specially hired for this purpose can be placed here.

## ANNEXURE- II

### CHECK LIST FOR DISTRICTS COLLECTORS FOR IMPLEMENTATION OF KANTI VELUGU PROGRAMME

S. No.	Activity
1.	Finalization of village/ward wise camp schedule in Kanti Velugu portal.
2.	Recruitment of PMOO's and DEO's
3.	Constitution of Kanti Velugu teams at Gram Panchayat / ward level.
4.	Conduct of Awareness Meetings at District, Mandal, Gram Panchayat and ULB level.
5.	Training of PHC MO's, ANM's, ASHA's, DEO's, and Pharmacists at District Level.
6.	Hiring of vehicles at District level
7.	Ensure proper arrangements at Camp site including Shamiyana, chairs, drinking water etc. Proper arrangements for queue control including Police deployment.
8.	Receipt of equipment at District level, safe storage and timely distribution to the Team.
9.	Pre- Camp publicity at the village/ward level.
10.	Conduct of camps as per schedule with 100% team attendance
11.	Monitor daily MIS Reports at PHC level.
12.	Monitor issue of prescription glasses.

**GOVERNMENT OF TELANGANA  
ABSTRACT**

**HM&FW Department - "Telangana Kanti Velugu" Programme - Comprehensive and Universal Eye screening for all the citizens of Telangana - Administrative sanction - Accorded - Orders - Issued.**

**HEALTH, MEDICAL & FAMILY WELFARE (D) DEPARTMENT**

**G.O.Rt.No.712,**

**Dated:25.11.2022**

**Read:**

From Commissioner, Health & Family Welfare, Hyderabad, Lr.Rc.No. 7019/KVP-2/NPCB&VI/2022, dated:18.11.2022

@@@

**ORDER:**

Government of Telangana has decided to take up comprehensive and universal eye screening for the entire population of Telangana under the Kanti Velugu program.

2. In this regard, a detailed program shall be drawn up to conduct eye camps in the state. Each camp will be conducted by a medical team, with a doctor, optometrist and requisite supporting staff. Each team will be provided with the requisite equipment, material, and drugs to extend services. Camps will be conducted in all rural and urban areas in the state. In each camp, data of all the persons screened will be captured electronically on a specially developed software so as to accurately track follow up services including distribution of glasses.
3. In order to implement the above program, Commissioner of Health & Family Welfare, Telangana, Hyderabad, has submitted proposals for which the required budget is approximately Rs. 250.00 crores.
4. After examination, Government hereby accord administrative sanction of Rs.200.00 crores (Rupees two hundred crore) initially for implementation of "Telangana Kanti Velugu" programme during the year 2023.
5. Commissioner of Health & Family Welfare, Telangana, Hyderabad and Director of Public Health & Family Welfare, Telangana, Hyderabad, shall take necessary action accordingly.
6. This order issues with the concurrence of the Finance (EBS.V) Department, vide their U.O.No.6573/340/A2/EBS.V-M&H/2022, dated 23.11.2022.

**(BY ORDER AND IN THE NAME OF THE GOVERNOR OF TELANGANA)**

**S.A.M.RIZVI  
SECRETARY TO GOVERNMENT**

To

Commissioner of Health & Family Welfare, Telangana, Hyderabad

Director of Public Health & Family Welfare, Telangana, Hyderabad

**Copy to:**

Finance (EBS-V) Department

PS to Secretary to Hon'ble CM

OSD to Hon'ble Minister (Medical & Health)

SC/SF

//FORWARDED:: BY ORDER//

  
**SECTION OFFICER**



GOVERNMENT OF TELANGANA  
ABSTRACT

Panchayat Raj and Rural Development Department – Implementation of Kanti Velugu Programme and Conduct of KV camp in 12,769 Gram Panchayats – Instructions-Issued.

PANCHAYAT RAJ AND RURAL DEVELOPMENT (GP.FIN) DEPARTMENT



G.O.Rt No:408

Dated:08.12.2022.

Read the following:

G.O.Rt.No.712, HM&FW (D) Dept., dated25.11.2022.

\*\*\*\*\*

**ORDER:**

Kanti Velugu will be launched by the Hon'ble Chief Minister of Telangana on 18.01.2023 to achieve the objective of avoidable blindness free Telangana. The universal adult population eye screening for vision problems will be conducted at the ward level for 100 days. To ensure proper logistic support for successful conduct of the program, the following instructions are issued:

1. **Camp Location:** The DPO shall ensure that Panchayat Secretaries concerned provide suitable government accommodation to conduct camp at GP level in consultation with the District Medical & Health Officer and PHC Medical Officers concerned.
  2. **Camp Logistics:** DPO shall ensure Panchayats Secretaries provide shamiyana, tables, chairs, drinking water and that toilets facilities are available for the convenience of patients in the camps. Uninterrupted electricity supply and regular sanitation should also be ensured. Further requisite Gram Panchayat staff should be positioned at the centers for assisting in queue management.
  3. **Camp Mobilization:** The Panchayat Secretaries shall provide assistance to DM & HOs in mobilization of public for attending the medical camps through Gram Panchayat Staff.
2. Expenditure in regard to above activities shall be met from Gram Panchayat funds.
3. The Director, Panchayat Raj & Rural Development shall take necessary action in this matter.

(BY ORDER AND IN THE NAME OF THE GOVERNOR OF TELANGANA)

M.RAGHUNANDAN RAO  
SECRETARY TO GOVERNMENT (FAC)

To  
The Director, Panchayat Raj and Rural Employment, Hyderabad.  
The Pay and Accounts Officer, Hyderabad.  
The Director of Treasuries and Accounts, Hyderabad.  
The Accountant General, Telangana, Hyderabad..

Copy to:

The PS to Secretary to Govt., PR&RD Department.  
The Finance (ESB-VIII) Department  
SF/SC.

//FORWARDED::BY ORDER//

SECTION OFFICER

GOVERNMENT OF TELANGANA

**ABSTRACT**

MA & UD Department - Kanti Velugu Program - Implementation of Kanti Velugu Program and conduct of Kanti Velugu camps in 142 Urban Local Bodies (ULBs) - Instructions - Issued

**MUNICIPAL ADMINISTRATION & URBAN DEVELOPMENT (MA) DEPARTMENT**

G.O.Rt.No.779,

Dated: 09.12.2022

Read:-

G.O.Rt.No.712, HM & FW (D) Department, Dated: 25.11.2022.

\*\*\*

**ORDER:-**

Kanti Velugu will be launched by the Hon'ble Chief Minister of Telangana on 18-01-2023 to achieve the objective of avoidable blindness free Telangana. The universal adult population eye screening for vision problems will be conducted at the ward level for 100 days. To ensure the proper logistic support for successful conduct of the program, the following instructions are issued:

- a. **Camp Location:** The Municipal Commissioners of the ULBs concerned shall provide suitable Government accommodation to conduct camp at ward level in consultation with the District Medical & Health Officer (DM&HO) and Urban Primary Health Center Medical Officers concerned.
  - b. **Camp Logistics:** The Municipal Commissioners should ensure that shamiyana, tables, chairs, drinking water and toilet facilities are available for the convenience of patients in the camps. Uninterrupted electricity supply and regular sanitation should also be ensured. Further requisite ULB Staff should be positioned at the centers for assisting in queue management.
  - c. **Camp Mobilization:** The Municipal Commissioners shall provide assistance to DM&HOs in mobilization of public for attending the medical camps through municipal staff, Self Help Groups (SHGs) / Slum Level Federation (SLFs), etc.
    - ULBs shall meet expenditure for above activities from Local body funds.
2. The Director of Municipal Administration, Hyderabad and the Commissioner, Greater Hyderabad Municipal Corporation, Hyderabad shall take necessary action accordingly.

(BY ORDER AND IN THE NAME OF THE GOVERNOR OF TELANGANA)

ARVIND KUMAR

SPECIAL CHIEF SECRETARY TO GOVERNMENT

To

The Commissioner, Greater Hyderabad Municipal Corporation, Hyderabad.

The Director of Municipal Administration, Hyderabad.

The All Commissioner in the State through the Director of Municipal Administration, Hyderabad.

**Copy to:**

P.S. to Pri. Secretary to Chief Minister.

OSD to Hon'ble Minister (MA&UD).

OSD to Spl. C.S to Govt., MA&UD Department.

The HM&FW Department.

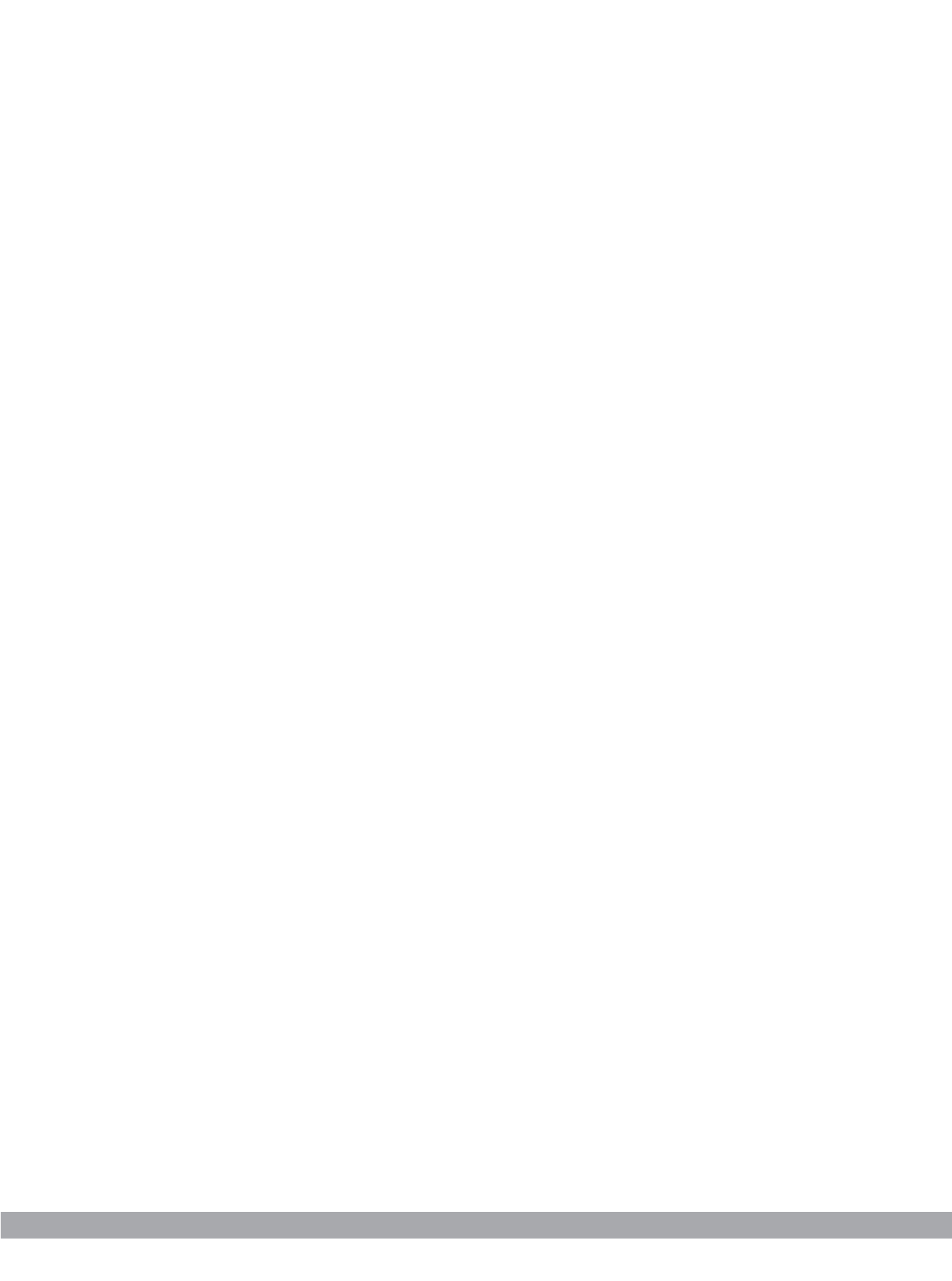
Sf/Sc.

//FORWARDED BY ORDER//

  
SECTION OFFICER  




**DISTRICT SCHEDULE  
for  
CAMPS**



## BHADRADRI KOTHAGUDEM DISTRICT

S No.	District Name	Mandal/Municipality	Name of PHC/UPHC	Village/Camp Location Name	Team ID	From Date	To Date
1	Bhadradi Kothagudem	Allapalli	Allapalli	Rayapadu	TM1343	18-01-2023	23-01-2023
2	Bhadradi Kothagudem	Allapalli	Allapalli	Ananthoggu	TM1343	24-01-2023	01-02-2023
3	Bhadradi Kothagudem	Allapalli	Allapalli	Allapalli	TM1343	02-02-2023	15-02-2023
4	Bhadradi Kothagudem	Allapalli	Allapalli	Ramanujagudem	TM1343	16-02-2023	21-02-2023
5	Bhadradi Kothagudem	Allapalli	Allapalli	Pathuru	TM1343	22-02-2023	23-02-2023
6	Bhadradi Kothagudem	Allapalli	Allapalli	Raghavapuram	TM1343	24-02-2023	02-03-2023
7	Bhadradi Kothagudem	Allapalli	Allapalli	Markodu	TM1343	03-03-2023	17-03-2023
8	Bhadradi Kothagudem	Allapalli	Allapalli	Nadimigudem	TM1343	20-03-2023	24-03-2023
9	Bhadradi Kothagudem	Allapalli	Allapalli	Bodaikunta	TM1343	27-03-2023	28-03-2023
10	Bhadradi Kothagudem	Allapalli	Allapalli	Adaviramaram	TM1343	29-03-2023	29-03-2023
11	Bhadradi Kothagudem	Allapalli	Allapalli	Pedda Venkatapuram	TM1343	31-03-2023	04-04-2023
12	Bhadradi Kothagudem	Gundala	Allapalli	Kachinapalli	TM1343	06-04-2023	17-04-2023
13	Bhadradi Kothagudem	Aswapuram	Aswapuram	Aswapuram	TM0236	18-01-2023	03-04-2023
14	Bhadradi Kothagudem	Aswapuram	Aswapuram	Thurramvari Gudem	TM1344	18-01-2023	23-01-2023
15	Bhadradi Kothagudem	Aswapuram	Aswapuram	Anandapuram	TM1344	24-01-2023	31-01-2023
16	Bhadradi Kothagudem	Aswapuram	Aswapuram	Mondikunta	TM1344	01-02-2023	16-02-2023
17	Bhadradi Kothagudem	Aswapuram	Aswapuram	Venkatapuram	TM1344	17-02-2023	23-02-2023
18	Bhadradi Kothagudem	Aswapuram	Aswapuram	Gondigudem Kothuru	TM1344	24-02-2023	28-02-2023
19	Bhadradi Kothagudem	Aswapuram	Aswapuram	Jaggaram	TM1344	01-03-2023	13-03-2023
20	Bhadradi Kothagudem	Aswapuram	Aswapuram	Kalyanapuram	TM1344	14-03-2023	17-03-2023
21	Bhadradi Kothagudem	Aswapuram	Aswapuram	Battilagumpu	TM1344	20-03-2023	24-03-2023
22	Bhadradi Kothagudem	Aswapuram	Aswapuram	Sandralabodu	TM1344	27-03-2023	29-03-2023
23	Bhadradi Kothagudem	Aswapuram	Aswapuram	Amerda	TM1344	31-03-2023	10-04-2023
24	Bhadradi Kothagudem	Aswapuram	Aswapuram	Gollagudem	TM0236	04-04-2023	17-04-2023
25	Bhadradi Kothagudem	Aswapuram	Aswapuram	Nellipaka	TM1344	11-04-2023	17-04-2023
26	Bhadradi Kothagudem	Aswapuram	Aswapuram	Ramachandrapuram	TM1344	18-04-2023	28-04-2023
27	Bhadradi Kothagudem	Aswapuram	Aswapuram	Seetharampuram	TM0236	18-04-2023	20-04-2023
28	Bhadradi Kothagudem	Aswapuram	Aswapuram	Thummalacheruvu	TM0236	21-04-2023	02-05-2023
29	Bhadradi Kothagudem	Aswapuram	Aswapuram	Manobothulapadu	TM1344	01-05-2023	01-05-2023
30	Bhadradi Kothagudem	Aswapuram	Aswapuram	Gondigudem	TM0236	03-05-2023	12-05-2023
31	Bhadradi Kothagudem	Aswapuram	Aswapuram	Yalakalagudem	TM0236	15-05-2023	17-05-2023
32	Bhadradi Kothagudem	Aswapuram	Aswapuram	Mittagudem	TM0236	18-05-2023	25-05-2023
33	Bhadradi Kothagudem	Aswapuram	Aswapuram	Ammagaripalli	TM0236	26-05-2023	01-06-2023
34	Bhadradi Kothagudem	Aswapuram	Aswapuram	Chinriyala	TM0236	02-06-2023	07-06-2023
35	Bhadradi Kothagudem	Aswapuram	Aswapuram	Chinthiryala Colony	TM0236	08-06-2023	14-06-2023
36	Bhadradi Kothagudem	Aswapuram	Aswapuram	Mallelamadugu	TM0236	15-06-2023	22-06-2023
37	Bhadradi Kothagudem	Aswaraopeta	Aswaraopeta	Aswaraopeta	TM1345	18-01-2023	31-03-2023
38	Bhadradi Kothagudem	Aswaraopeta	Aswaraopeta	Peraigudem	TM1346	18-01-2023	20-02-2023
39	Bhadradi Kothagudem	Aswaraopeta	Aswaraopeta	Naramvarigudem Colony	TM1346	21-02-2023	22-02-2023
40	Bhadradi Kothagudem	Aswaraopeta	Aswaraopeta	Achuthapuram	TM1346	23-02-2023	03-03-2023
41	Bhadradi Kothagudem	Aswaraopeta	Aswaraopeta	Dibbagudem	TM1346	06-03-2023	13-03-2023
42	Bhadradi Kothagudem	Aswaraopeta	Aswaraopeta	Jammigudem	TM1346	14-03-2023	17-03-2023
43	Bhadradi Kothagudem	Aswaraopeta	Aswaraopeta	Ootlapalli	TM1346	20-03-2023	06-04-2023
44	Bhadradi Kothagudem	Aswaraopeta	Aswaraopeta	Patha Alligudem	TM1345	03-04-2023	10-04-2023
45	Bhadradi Kothagudem	Aswaraopeta	Aswaraopeta	Vinayakapuram	TM1346	10-04-2023	03-05-2023
46	Bhadradi Kothagudem	Aswaraopeta	Aswaraopeta	Pathareddygudem	TM1345	11-04-2023	13-04-2023
47	Bhadradi Kothagudem	Aswaraopeta	Aswaraopeta	Maddikonda	TM1345	17-04-2023	19-04-2023
48	Bhadradi Kothagudem	Aswaraopeta	Aswaraopeta	Gurralacheruvu	TM1345	20-04-2023	25-04-2023
49	Bhadradi Kothagudem	Aswaraopeta	Aswaraopeta	Kessappagudem	TM1345	26-04-2023	03-05-2023
50	Bhadradi Kothagudem	Aswaraopeta	Aswaraopeta	Nandipadu	TM1346	04-05-2023	11-05-2023
51	Bhadradi Kothagudem	Aswaraopeta	Aswaraopeta	Vedanthapuram	TM1345	04-05-2023	08-05-2023
52	Bhadradi Kothagudem	Aswaraopeta	Aswaraopeta	Asupaka	TM1345	09-05-2023	12-05-2023
53	Bhadradi Kothagudem	Aswaraopeta	Aswaraopeta	Kotha Mamillavari Gudem	TM1346	12-05-2023	24-05-2023
54	Bhadradi Kothagudem	Aswaraopeta	Aswaraopeta	Moddulamada	TM1345	15-05-2023	16-05-2023
55	Bhadradi Kothagudem	Aswaraopeta	Aswaraopeta	Tirumalakunta	TM1345	17-05-2023	30-05-2023
56	Bhadradi Kothagudem	Aswaraopeta	Aswaraopeta	Naramvarigudem	TM1346	25-05-2023	02-06-2023
57	Bhadradi Kothagudem	Chandrugonda	Chandrugonda	Chandrugonda	TM1347	18-01-2023	23-02-2023
58	Bhadradi Kothagudem	Chandrugonda	Chandrugonda	Gurramgudem	TM1347	24-02-2023	28-02-2023
59	Bhadradi Kothagudem	Chandrugonda	Chandrugonda	Bendalapadu	TM1347	01-03-2023	09-03-2023

## BHADRADRI KOTHAGUDEM DISTRICT

BHADRADRI KOTHAGUDEM

60	Bhadradi Kothagudem	Chandrugonda	Chandrugonda	Tippanapalli	TM1347	10-03-2023	31-03-2023
61	Bhadradi Kothagudem	Chandrugonda	Chandrugonda	Repalleveda	TM1347	03-04-2023	11-04-2023
62	Bhadradi Kothagudem	Chandrugonda	Chandrugonda	Ravikampadu	TM1347	12-04-2023	26-04-2023
63	Bhadradi Kothagudem	Chandrugonda	Chandrugonda	Thungaram	TM1347	27-04-2023	08-05-2023
64	Bhadradi Kothagudem	Chandrugonda	Chandrugonda	Ganugapadu	TM1347	09-05-2023	17-05-2023
65	Bhadradi Kothagudem	Chandrugonda	Chandrugonda	Mangaiah Banjar	TM1347	18-05-2023	22-05-2023
66	Bhadradi Kothagudem	Chandrugonda	Chandrugonda	Venkata Thanda	TM1347	23-05-2023	30-05-2023
67	Bhadradi Kothagudem	Chandrugonda	Chandrugonda	Dameracherla	TM1351	26-05-2023	01-06-2023
68	Bhadradi Kothagudem	Chandrugonda	Chandrugonda	Maddukuru	TM1347	31-05-2023	07-06-2023
69	Bhadradi Kothagudem	Chandrugonda	Chandrugonda	Seethagudem	TM1351	02-06-2023	07-06-2023
70	Bhadradi Kothagudem	Chandrugonda	Chandrugonda	Pokalagudem	TM1347	08-06-2023	19-06-2023
71	Bhadradi Kothagudem	Cherla	Cherla	Cherla	TM1348	18-01-2023	02-03-2023
72	Bhadradi Kothagudem	Cherla	Cherla	Keswapuram	TM1348	03-03-2023	10-03-2023
73	Bhadradi Kothagudem	Cherla	Cherla	Laxmi Colony	TM1348	13-03-2023	21-03-2023
74	Bhadradi Kothagudem	Cherla	Cherla	Koyuru	TM1348	23-03-2023	03-04-2023
75	Bhadradi Kothagudem	Cherla	Cherla	Subbampeta	TM1348	04-04-2023	11-04-2023
76	Bhadradi Kothagudem	Cherla	Cherla	Pusuguppa	TM1348	12-04-2023	19-04-2023
77	Bhadradi Kothagudem	Cherla	Cherla	Kothapalli Z	TM1348	20-04-2023	26-04-2023
78	Bhadradi Kothagudem	Cherla	Cherla	Lingapuram	TM1348	27-04-2023	04-05-2023
79	Bhadradi Kothagudem	Cherla	Cherla	Gompalli	TM1348	05-05-2023	10-05-2023
80	Bhadradi Kothagudem	Cherla	Cherla	Mogallapally	TM1348	11-05-2023	17-05-2023
81	Bhadradi Kothagudem	Cherla	Cherla	C.Kathigudem	TM1348	18-05-2023	24-05-2023
82	Bhadradi Kothagudem	Cherla	Cherla	Upparigudem	TM1348	25-05-2023	02-06-2023
83	Bhadradi Kothagudem	Dammapeta	Dammapeta	Dammapeta	TM1349	18-01-2023	28-02-2023
84	Bhadradi Kothagudem	Dammapeta	Dammapeta	Malkaram	TM1349	01-03-2023	13-03-2023
85	Bhadradi Kothagudem	Dammapeta	Dammapeta	Rachurupalli Hqs Lachapuram	TM1349	14-03-2023	28-03-2023
86	Bhadradi Kothagudem	Dammapeta	Dammapeta	Mandalapalli	TM1349	29-03-2023	02-05-2023
87	Bhadradi Kothagudem	Dammapeta	Dammapeta	Thatisubbannagudem	TM1354	20-04-2023	25-04-2023
88	Bhadradi Kothagudem	Dammapeta	Dammapeta	Gunnepalli	TM1354	26-04-2023	01-05-2023
89	Bhadradi Kothagudem	Dammapeta	Dammapeta	Ganeshpadu	TM1354	02-05-2023	08-05-2023
90	Bhadradi Kothagudem	Dammapeta	Dammapeta	Marappagudem	TM1349	03-05-2023	11-05-2023
91	Bhadradi Kothagudem	Dammapeta	Dammapeta	Seetarampuram	TM1354	09-05-2023	11-05-2023
92	Bhadradi Kothagudem	Dammapeta	Dammapeta	Akinepalli	TM1349	12-05-2023	17-05-2023
93	Bhadradi Kothagudem	Dammapeta	Dammapeta	Nacharam	TM1354	12-05-2023	24-05-2023
94	Bhadradi Kothagudem	Dammapeta	Dammapeta	Allipalli	TM1349	18-05-2023	19-05-2023
95	Bhadradi Kothagudem	Dammapeta	Dammapeta	Mustibanda	TM1349	22-05-2023	06-06-2023
96	Bhadradi Kothagudem	Dammapeta	Dammapeta	Tottipampu	TM1354	25-05-2023	01-06-2023
97	Bhadradi Kothagudem	Dammapeta	Dammapeta	Kommugudem	TM1354	02-06-2023	06-06-2023
98	Bhadradi Kothagudem	Dammapeta	Dammapeta	Vadlagudem	TM1349	07-06-2023	09-06-2023
99	Bhadradi Kothagudem	Dammapeta	Dammapeta	Moddulgudem	TM1349	12-06-2023	21-06-2023
100	Bhadradi Kothagudem	Dummugudem	Dummugudem	Kothapalli	TM1350	18-01-2023	30-01-2023
101	Bhadradi Kothagudem	Dummugudem	Dummugudem	Koya Narsapuram	TM1350	31-01-2023	02-02-2023
102	Bhadradi Kothagudem	Dummugudem	Dummugudem	Ramachandrunipeta	TM1350	03-02-2023	07-02-2023
103	Bhadradi Kothagudem	Dummugudem	Dummugudem	Narayanarao Peta	TM1350	08-02-2023	15-02-2023
104	Bhadradi Kothagudem	Dummugudem	Dummugudem	Lachigudem	TM1350	16-02-2023	22-02-2023
105	Bhadradi Kothagudem	Dummugudem	Dummugudem	Maraigudem	TM1350	23-02-2023	02-03-2023
106	Bhadradi Kothagudem	Dummugudem	Dummugudem	Pedakamalapuram	TM1350	03-03-2023	09-03-2023
107	Bhadradi Kothagudem	Dummugudem	Dummugudem	Arlagudem	TM1350	10-03-2023	21-03-2023
108	Bhadradi Kothagudem	Dummugudem	Dummugudem	Singavaram	TM1350	23-03-2023	31-03-2023
109	Bhadradi Kothagudem	Dummugudem	Dummugudem	Dabbanuthala	TM1350	03-04-2023	06-04-2023
110	Bhadradi Kothagudem	Dummugudem	Dummugudem	Kothuru	TM1350	10-04-2023	13-04-2023
111	Bhadradi Kothagudem	Dummugudem	Dummugudem	Anjipaka	TM1350	17-04-2023	21-04-2023
112	Bhadradi Kothagudem	Dummugudem	Dummugudem	Pragallapalli	TM1350	24-04-2023	02-05-2023
113	Bhadradi Kothagudem	Dummugudem	Dummugudem	Dummugudem	TM1350	03-05-2023	12-05-2023
114	Bhadradi Kothagudem	Dummugudem	Dummugudem	Mulkapadu	TM1350	15-05-2023	16-05-2023
115	Bhadradi Kothagudem	Dummugudem	Dummugudem	Laxminagaram	TM1350	17-05-2023	25-05-2023
116	Bhadradi Kothagudem	Dummugudem	Dummugudem	Achuthapuram	TM1350	26-05-2023	30-05-2023
117	Bhadradi Kothagudem	Annapureddypalli	Erragunta	Peddireddigudem	TM1351	18-01-2023	09-02-2023
118	Bhadradi Kothagudem	Annapureddypalli	Erragunta	Bheemunigudem	TM1351	10-02-2023	15-02-2023

## BHADRADRI KOTHAGUDEM DISTRICT

119	Bhadradi Kothagudem	Annapureddypalli	Erragunta	Gumpena	TM1351	16-02-2023	24-02-2023
120	Bhadradi Kothagudem	Annapureddypalli	Erragunta	Narsapuram	TM1351	27-02-2023	14-03-2023
121	Bhadradi Kothagudem	Annapureddypalli	Erragunta	Vootupalli	TM1351	15-03-2023	20-03-2023
122	Bhadradi Kothagudem	Annapureddypalli	Erragunta	Abbugudem	TM1351	21-03-2023	03-04-2023
123	Bhadradi Kothagudem	Annapureddypalli	Erragunta	Marrigudem	TM1351	04-04-2023	13-04-2023
124	Bhadradi Kothagudem	Annapureddypalli	Erragunta	Pentlam	TM1351	17-04-2023	27-04-2023
125	Bhadradi Kothagudem	Annapureddypalli	Erragunta	Annapureddipalli	TM1351	28-04-2023	22-05-2023
126	Bhadradi Kothagudem	Annapureddypalli	Erragunta	Thottipampu	TM1351	23-05-2023	25-05-2023
127	Bhadradi Kothagudem	Palvancha	Gudipadu	Palwancha_Ward 6	TM1352	18-01-2023	30-01-2023
128	Bhadradi Kothagudem	Palvancha	Gudipadu	Palwancha_Ward 8	TM1352	31-01-2023	08-02-2023
129	Bhadradi Kothagudem	Palvancha	Gudipadu	Palwancha_Ward 15	TM1352	09-02-2023	22-02-2023
130	Bhadradi Kothagudem	Palvancha	Gudipadu	Palwancha_Ward 13	TM1352	23-02-2023	20-03-2023
131	Bhadradi Kothagudem	Palvancha	Gudipadu	Palwancha_Ward 14	TM1352	21-03-2023	02-05-2023
132	Bhadradi Kothagudem	Aswaraopeta	Gummadavally	Gummadavalli	TM1353	18-01-2023	30-01-2023
133	Bhadradi Kothagudem	Aswaraopeta	Gummadavally	Bachuvarigudem	TM1353	31-01-2023	07-02-2023
134	Bhadradi Kothagudem	Aswaraopeta	Gummadavally	Koya Rangapuram	TM1353	08-02-2023	17-02-2023
135	Bhadradi Kothagudem	Aswaraopeta	Gummadavally	Anantharam	TM1353	20-02-2023	23-02-2023
136	Bhadradi Kothagudem	Aswaraopeta	Gummadavally	Ramannagudem	TM1353	24-02-2023	27-02-2023
137	Bhadradi Kothagudem	Aswaraopeta	Gummadavally	Gandlagudem	TM1353	28-02-2023	08-03-2023
138	Bhadradi Kothagudem	Aswaraopeta	Gummadavally	Narayana Puram	TM1353	09-03-2023	24-03-2023
139	Bhadradi Kothagudem	Aswaraopeta	Gummadavally	Mallaigudem	TM1353	27-03-2023	04-04-2023
140	Bhadradi Kothagudem	Aswaraopeta	Gummadavally	Kavidigundla	TM1353	06-04-2023	12-04-2023
141	Bhadradi Kothagudem	Aswaraopeta	Gummadavally	Kannaigudem	TM1353	13-04-2023	20-04-2023
142	Bhadradi Kothagudem	Gundala	Gundala	Gundala	TM1354	18-01-2023	09-02-2023
143	Bhadradi Kothagudem	Gundala	Gundala	Lingagudem	TM1354	10-02-2023	15-02-2023
144	Bhadradi Kothagudem	Gundala	Gundala	Rollagadda	TM1354	16-02-2023	22-02-2023
145	Bhadradi Kothagudem	Gundala	Gundala	Padugonigudem	TM1354	23-02-2023	28-02-2023
146	Bhadradi Kothagudem	Gundala	Gundala	Mamakannu	TM1354	01-03-2023	02-03-2023
147	Bhadradi Kothagudem	Gundala	Gundala	Muthapuram	TM1354	03-03-2023	14-03-2023
148	Bhadradi Kothagudem	Gundala	Gundala	Sayannapalli	TM1354	15-03-2023	24-03-2023
149	Bhadradi Kothagudem	Gundala	Gundala	Settipalli	TM1354	27-03-2023	31-03-2023
150	Bhadradi Kothagudem	Gundala	Gundala	Shambunigudem	TM1354	03-04-2023	12-04-2023
151	Bhadradi Kothagudem	Gundala	Gundala	Damarathogu	TM1354	13-04-2023	18-04-2023
152	Bhadradi Kothagudem	Allapalli	Gundala	Dongathogu	TM1354	19-04-2023	19-04-2023
153	Bhadradi Kothagudem	Burgampahad	Jagannadhapuram	Pinapaka Pattinagar	TM1355	18-01-2023	27-01-2023
154	Bhadradi Kothagudem	Burgampahad	Jagannadhapuram	Uppusaka	TM1355	30-01-2023	08-02-2023
155	Bhadradi Kothagudem	Palvancha	Jagannadhapuram	Dantheboru	TM1355	09-02-2023	15-02-2023
156	Bhadradi Kothagudem	Palvancha	Jagannadhapuram	Sc Colony Dantelabora	TM1355	16-02-2023	20-02-2023
157	Bhadradi Kothagudem	Palvancha	Jagannadhapuram	Bandrugonda	TM1355	21-02-2023	23-02-2023



## BHADRADRI KOTHAGUDEM DISTRICT

158	Bhadradi Kothagudem	Palvancha	Jagannadhapuram	Sangam	TM1355	24-02-2023	27-02-2023
159	Bhadradi Kothagudem	Palvancha	Jagannadhapuram	Narayanaraopeta Sc Colony	TM1355	28-02-2023	01-03-2023
160	Bhadradi Kothagudem	Palvancha	Jagannadhapuram	Nagaram	TM1355	02-03-2023	13-03-2023
161	Bhadradi Kothagudem	Palvancha	Jagannadhapuram	Rangapuram	TM1355	14-03-2023	17-03-2023
162	Bhadradi Kothagudem	Palvancha	Jagannadhapuram	Nagaram Colony	TM1355	20-03-2023	24-03-2023
163	Bhadradi Kothagudem	Palvancha	Jagannadhapuram	Thogudem	TM1355	27-03-2023	03-04-2023
164	Bhadradi Kothagudem	Palvancha	Jagannadhapuram	Kesavapuram	TM1355	04-04-2023	11-04-2023
165	Bhadradi Kothagudem	Palvancha	Jagannadhapuram	Jagannadhapuram	TM1355	12-04-2023	26-04-2023
166	Bhadradi Kothagudem	Palvancha	Jagannadhapuram	Somulagudem	TM1355	27-04-2023	01-05-2023
167	Bhadradi Kothagudem	Palvancha	Jagannadhapuram	Suraram	TM1355	02-05-2023	08-05-2023
168	Bhadradi Kothagudem	Palvancha	Jagannadhapuram	Kotha Suraram	TM1355	09-05-2023	11-05-2023
169	Bhadradi Kothagudem	Palvancha	Jagannadhapuram	Bikku Thanda	TM1355	12-05-2023	15-05-2023
170	Bhadradi Kothagudem	Palvancha	Jagannadhapuram	Laxmidivipalli (U)	TM1355	16-05-2023	19-05-2023
171	Bhadradi Kothagudem	Palvancha	Jagannadhapuram	Basavatharaka Colony	TM1355	22-05-2023	25-05-2023
172	Bhadradi Kothagudem	Mulakalapally	Jagannadhapuram	Vk Ramavaram	TM1355	26-05-2023	01-06-2023
173	Bhadradi Kothagudem	Mulakalapally	Jagannadhapuram	Seethampuram	TM1355	02-06-2023	16-06-2023
174	Bhadradi Kothagudem	Pinapaka	Janampeta	Janampeta	TM1356	18-01-2023	08-02-2023
175	Bhadradi Kothagudem	Pinapaka	Janampeta	Kistapuram	TM1356	09-02-2023	10-02-2023
176	Bhadradi Kothagudem	Pinapaka	Janampeta	Duginepalli	TM1356	13-02-2023	22-02-2023
177	Bhadradi Kothagudem	Pinapaka	Janampeta	Chegarsala	TM1356	23-02-2023	27-02-2023
178	Bhadradi Kothagudem	Pinapaka	Janampeta	Thondapuri Kothagudem	TM1356	28-02-2023	02-03-2023
179	Bhadradi Kothagudem	Pinapaka	Janampeta	Amararam	TM1356	03-03-2023	10-03-2023
180	Bhadradi Kothagudem	Pinapaka	Janampeta	Pandurangapuram	TM1356	13-03-2023	15-03-2023
181	Bhadradi Kothagudem	Pinapaka	Janampeta	Singireddipalli	TM1356	16-03-2023	27-03-2023
182	Bhadradi Kothagudem	Pinapaka	Janampeta	Venkatraopeta	TM1356	28-03-2023	31-03-2023
183	Bhadradi Kothagudem	Pinapaka	Janampeta	Jaggaram	TM1356	03-04-2023	10-04-2023
184	Bhadradi Kothagudem	Pinapaka	Janampeta	Mallaram	TM1356	11-04-2023	18-04-2023
185	Bhadradi Kothagudem	Pinapaka	Janampeta	Elchireddipally	TM1356	19-04-2023	27-04-2023
186	Bhadradi Kothagudem	Julurupadu	Julurupadu	Anantharam	TM0203	18-01-2023	20-01-2023
187	Bhadradi Kothagudem	Julurupadu	Julurupadu	Annarupadu	TM0203	23-01-2023	27-01-2023
188	Bhadradi Kothagudem	Julurupadu	Julurupadu	Bethalampadu	TM0203	30-01-2023	10-02-2023
189	Bhadradi Kothagudem	Julurupadu	Julurupadu	Bojya Thanda	TM0203	13-02-2023	16-02-2023
190	Bhadradi Kothagudem	Julurupadu	Julurupadu	Chintala Thanda	TM0203	17-02-2023	17-02-2023
191	Bhadradi Kothagudem	Julurupadu	Julurupadu	Gandhi Nagar	TM0203	20-02-2023	22-02-2023
192	Bhadradi Kothagudem	Julurupadu	Julurupadu	Gundepudi	TM0203	23-02-2023	06-03-2023
193	Bhadradi Kothagudem	Julurupadu	Julurupadu	Gundlarevu	TM0203	08-03-2023	14-03-2023
194	Bhadradi Kothagudem	Julurupadu	Julurupadu	Guravagu Thanda	TM0203	15-03-2023	16-03-2023
195	Bhadradi Kothagudem	Julurupadu	Julurupadu	Julurpad	TM0203	17-03-2023	04-04-2023
196	Bhadradi Kothagudem	Julurupadu	Julurupadu	Kakarla	TM0203	06-04-2023	24-04-2023
197	Bhadradi Kothagudem	Julurupadu	Julurupadu	Papakollu	TM1343	18-04-2023	05-05-2023
198	Bhadradi Kothagudem	Julurupadu	Julurupadu	Karivarigudem	TM0203	25-04-2023	01-05-2023
199	Bhadradi Kothagudem	Julurupadu	Julurupadu	Kommugudem	TM0203	02-05-2023	09-05-2023
200	Bhadradi Kothagudem	Julurupadu	Julurupadu	Sairam Thanda	TM1343	08-05-2023	09-05-2023
201	Bhadradi Kothagudem	Julurupadu	Julurupadu	Kothuru	TM0203	10-05-2023	16-05-2023
202	Bhadradi Kothagudem	Julurupadu	Julurupadu	Sambunigudem	TM1343	10-05-2023	11-05-2023
203	Bhadradi Kothagudem	Julurupadu	Julurupadu	Suraram	TM1343	12-05-2023	18-05-2023

## BHADRADRI KOTHAGUDEM DISTRICT

204	Bhadradi Kothagudem	Julurupadu	Julurupadu	Machinenipeta	TM0203	17-05-2023	23-05-2023
205	Bhadradi Kothagudem	Julurupadu	Julurupadu	Vengannapalem	TM1343	19-05-2023	31-05-2023
206	Bhadradi Kothagudem	Julurupadu	Julurupadu	Machinenipeta Thanda	TM0203	24-05-2023	01-06-2023
207	Bhadradi Kothagudem	Julurupadu	Julurupadu	Vinobha Nagar	TM1343	01-06-2023	06-06-2023
208	Bhadradi Kothagudem	Julurupadu	Julurupadu	Nallabandabodu	TM0203	02-06-2023	02-06-2023
209	Bhadradi Kothagudem	Julurupadu	Julurupadu	Padamati Narsapuram	TM0203	05-06-2023	16-06-2023
210	Bhadradi Kothagudem	Karakagudem	Karakagudem	Karakagudem	TM0204	18-01-2023	30-01-2023
211	Bhadradi Kothagudem	Karakagudem	Karakagudem	Samathbattupalli	TM0204	31-01-2023	06-02-2023
212	Bhadradi Kothagudem	Karakagudem	Karakagudem	Chirramalla	TM0204	07-02-2023	10-02-2023
213	Bhadradi Kothagudem	Karakagudem	Karakagudem	Vattamvarigumpu	TM0204	13-02-2023	15-02-2023
214	Bhadradi Kothagudem	Karakagudem	Karakagudem	Padma Puram	TM0204	16-02-2023	21-02-2023
215	Bhadradi Kothagudem	Karakagudem	Karakagudem	Raghunadhapalem	TM0204	22-02-2023	27-02-2023
216	Bhadradi Kothagudem	Karakagudem	Karakagudem	Thatigudem	TM0204	28-02-2023	02-03-2023
217	Bhadradi Kothagudem	Karakagudem	Karakagudem	Venkatapuram	TM0204	03-03-2023	06-03-2023
218	Bhadradi Kothagudem	Karakagudem	Karakagudem	Battupalli	TM0204	08-03-2023	14-03-2023
219	Bhadradi Kothagudem	Karakagudem	Karakagudem	Kannaigudem	TM0204	15-03-2023	16-03-2023
220	Bhadradi Kothagudem	Karakagudem	Karakagudem	Regalla	TM0204	17-03-2023	23-03-2023
221	Bhadradi Kothagudem	Karakagudem	Karakagudem	Anantharam	TM0204	24-03-2023	03-04-2023
222	Bhadradi Kothagudem	Karakagudem	Karakagudem	Chooppala	TM0204	04-04-2023	10-04-2023
223	Bhadradi Kothagudem	Karakagudem	Karakagudem	Kothagudem	TM0204	11-04-2023	17-04-2023
224	Bhadradi Kothagudem	Karakagudem	Karakagudem	Samath Mothe	TM0204	18-04-2023	19-04-2023
225	Bhadradi Kothagudem	Karakagudem	Karakagudem	Thummalagudem	TM0204	20-04-2023	24-04-2023
226	Bhadradi Kothagudem	Yellandu	Komararam	Komararam	TM0205	18-01-2023	27-01-2023
227	Bhadradi Kothagudem	Yellandu	Komararam	Pocharam Thanda	TM0205	30-01-2023	03-02-2023
228	Bhadradi Kothagudem	Yellandu	Komararam	Manikyaram	TM0205	06-02-2023	17-02-2023
229	Bhadradi Kothagudem	Yellandu	Komararam	Marrigudem	TM0205	20-02-2023	28-02-2023
230	Bhadradi Kothagudem	Yellandu	Komararam	Masivagu	TM0205	01-03-2023	08-03-2023
231	Bhadradi Kothagudem	Yellandu	Komararam	Mutharapukatta	TM0205	09-03-2023	14-03-2023
232	Bhadradi Kothagudem	Yellandu	Komararam	Polaram	TM0205	15-03-2023	29-03-2023
233	Bhadradi Kothagudem	Yellandu	Komararam	Boya Thanda	TM0205	31-03-2023	10-04-2023
234	Bhadradi Kothagudem	Yellandu	Komararam	Csp Basthi	TM0205	11-04-2023	19-04-2023
235	Bhadradi Kothagudem	Yellandu	Komararam	Repallewada	TM0205	20-04-2023	01-05-2023
236	Bhadradi Kothagudem	Yellandu	Komararam	Voddugudem	TM0205	02-05-2023	11-05-2023
237	Bhadradi Kothagudem	Yellandu	Komararam	Lachagudem	TM0205	12-05-2023	19-05-2023
238	Bhadradi Kothagudem	Yellandu	Komararam	Dhaniyalapadu	TM0205	22-05-2023	25-05-2023
239	Bhadradi Kothagudem	Yellandu	Komararam	Mamidigundala	TM0205	26-05-2023	01-06-2023
240	Bhadradi Kothagudem	Yellandu	Komararam	Kommugudem	TM0205	02-06-2023	13-06-2023
241	Bhadradi Kothagudem	Yellandu	Komararam	Challa Samudram	TM0205	14-06-2023	26-06-2023
242	Bhadradi Kothagudem	Mulakalapally	Mangapeta	Ramachandrapuram	TM0206	18-01-2023	24-01-2023
243	Bhadradi Kothagudem	Mulakalapally	Mangapeta	Chaparalipalli	TM0206	25-01-2023	01-02-2023
244	Bhadradi Kothagudem	Mulakalapally	Mangapeta	Guttugudem	TM0206	02-02-2023	07-02-2023
245	Bhadradi Kothagudem	Mulakalapally	Mangapeta	Kamalapuram	TM0206	08-02-2023	14-02-2023
246	Bhadradi Kothagudem	Mulakalapally	Mangapeta	Seethaigudem	TM0206	15-02-2023	23-02-2023
247	Bhadradi Kothagudem	Mulakalapally	Mangapeta	Pusugudem	TM0206	24-02-2023	08-03-2023
248	Bhadradi Kothagudem	Mulakalapally	Mangapeta	Madaram	TM0206	09-03-2023	17-03-2023
249	Bhadradi Kothagudem	Mulakalapally	Mangapeta	Patha Gundalapadu	TM0206	20-03-2023	24-03-2023
250	Bhadradi Kothagudem	Mulakalapally	Mangapeta	Thimmampeta	TM0206	27-03-2023	04-04-2023
251	Bhadradi Kothagudem	Mulakalapally	Mangapeta	Pogallapalli	TM0206	06-04-2023	18-04-2023
252	Bhadradi Kothagudem	Mulakalapally	Mangapeta	Chowtigudem	TM0206	19-04-2023	27-04-2023
253	Bhadradi Kothagudem	Mulakalapally	Mangapeta	Mulakalapalli	TM1353	21-04-2023	17-05-2023
254	Bhadradi Kothagudem	Mulakalapally	Mangapeta	Tallapai	TM0206	28-04-2023	03-05-2023
255	Bhadradi Kothagudem	Mulakalapally	Mangapeta	Mookamamidi	TM0206	04-05-2023	15-05-2023
256	Bhadradi Kothagudem	Mulakalapally	Mangapeta	Rachannagudem	TM0206	16-05-2023	19-05-2023
257	Bhadradi Kothagudem	Mulakalapally	Mangapeta	Mutyalampadu	TM0206	22-05-2023	24-05-2023
258	Bhadradi Kothagudem	Mulakalapally	Mangapeta	Patha Gangaram	TM0206	25-05-2023	01-06-2023
259	Bhadradi Kothagudem	Mulakalapally	Mangapeta	Jagannadhapuram	TM0206	02-06-2023	22-06-2023
260	Bhadradi Kothagudem	Manuguru	Manuguru	Dammakapeta	TM0207	18-01-2023	24-01-2023
261	Bhadradi Kothagudem	Manuguru	Manuguru	Manuguru_Ward 5	TM0208	18-01-2023	31-01-2023
262	Bhadradi Kothagudem	Manuguru	Manuguru	Manuguru_Ward 23	TM0209	18-01-2023	23-01-2023
263	Bhadradi Kothagudem	Manuguru	Manuguru	Manuguru_Ward 20	TM0209	24-01-2023	27-01-2023
264	Bhadradi Kothagudem	Manuguru	Manuguru	Sambaigudem	TM0207	25-01-2023	02-02-2023

## BHADRADRI KOTHAGUDEM DISTRICT

265	Bhadradi Kothagudem	Manuguru	Manuguru	Manuguru_Ward 15	TM0209	30-01-2023	02-02-2023
266	Bhadradi Kothagudem	Manuguru	Manuguru	Manuguru_Ward 6	TM0208	01-02-2023	10-02-2023
267	Bhadradi Kothagudem	Manuguru	Manuguru	Ramanujavaram	TM0207	03-02-2023	17-02-2023
268	Bhadradi Kothagudem	Manuguru	Manuguru	Manuguru_Ward 16	TM0209	03-02-2023	16-02-2023
269	Bhadradi Kothagudem	Manuguru	Manuguru	Manuguru_Ward 7	TM0208	13-02-2023	27-02-2023
270	Bhadradi Kothagudem	Manuguru	Manuguru	Manuguru_Ward 12	TM0209	17-02-2023	21-02-2023
271	Bhadradi Kothagudem	Manuguru	Manuguru	Pagideru	TM0207	20-02-2023	06-03-2023
272	Bhadradi Kothagudem	Manuguru	Manuguru	Manuguru_Ward 13	TM0209	22-02-2023	24-02-2023
273	Bhadradi Kothagudem	Manuguru	Manuguru	Manuguru_Ward 14	TM0209	27-02-2023	02-03-2023
274	Bhadradi Kothagudem	Manuguru	Manuguru	Manuguru_Ward 8	TM0208	28-02-2023	27-03-2023
275	Bhadradi Kothagudem	Manuguru	Manuguru	Manuguru_Ward 17	TM0209	03-03-2023	10-03-2023
276	Bhadradi Kothagudem	Manuguru	Manuguru	Thirlapuram	TM0207	08-03-2023	15-03-2023
277	Bhadradi Kothagudem	Manuguru	Manuguru	Manuguru_Ward 21	TM0209	13-03-2023	15-03-2023
278	Bhadradi Kothagudem	Manuguru	Manuguru	Samithsingaram	TM0207	16-03-2023	22-05-2023
279	Bhadradi Kothagudem	Manuguru	Manuguru	Manuguru_Ward 22	TM0209	16-03-2023	17-03-2023
280	Bhadradi Kothagudem	Manuguru	Manuguru	Kunavaram	TM0209	20-03-2023	31-05-2023
281	Bhadradi Kothagudem	Manuguru	Manuguru	Manuguru_Ward 9	TM0208	28-03-2023	12-04-2023
282	Bhadradi Kothagudem	Manuguru	Manuguru	Manuguru_Ward 4	TM0208	13-04-2023	24-04-2023
283	Bhadradi Kothagudem	Manuguru	Manuguru	Manuguru_Ward 10	TM0208	25-04-2023	02-05-2023
284	Bhadradi Kothagudem	Manuguru	Manuguru	Manuguru_Ward 11	TM0208	03-05-2023	08-05-2023
285	Bhadradi Kothagudem	Manuguru	Manuguru	Manuguru_Ward 18	TM0208	09-05-2023	15-05-2023
286	Bhadradi Kothagudem	Manuguru	Manuguru	Ippala Singaram	TM0207	23-05-2023	30-05-2023
287	Bhadradi Kothagudem	Manuguru	Manuguru	Kattu Mallaram	TM0207	31-05-2023	02-06-2023
288	Bhadradi Kothagudem	Manuguru	Manuguru	Lanka Mallaram	TM0207	05-06-2023	06-06-2023
289	Bhadradi Kothagudem	Manuguru	Manuguru	Gutta Mallaram	TM0207	07-06-2023	09-06-2023
290	Bhadradi Kothagudem	Manuguru	Manuguru	Muthyalamma Nagar	TM0207	12-06-2023	19-06-2023
291	Bhadradi Kothagudem	Manuguru	Manuguru	Thoggudem	TM0207	20-06-2023	23-06-2023
292	Bhadradi Kothagudem	Manuguru	Manuguru	Bugga (Hill Area)	TM0207	26-06-2023	27-06-2023
293	Bhadradi Kothagudem	Manuguru	Manuguru	Manuguru_Ward 3	TM0207	28-06-2023	05-07-2023
294	Bhadradi Kothagudem	Burgampahad	Morampallibanjara	Lakshmiapuram	TM0210	18-01-2023	30-01-2023
295	Bhadradi Kothagudem	Burgampahad	Morampallibanjara	Anjanapuram	TM0211	18-01-2023	30-01-2023
296	Bhadradi Kothagudem	Burgampahad	Morampallibanjara	Morampalli	TM0210	31-01-2023	21-02-2023
297	Bhadradi Kothagudem	Burgampahad	Morampallibanjara	Burgampahad	TM0211	31-01-2023	09-03-2023
298	Bhadradi Kothagudem	Burgampahad	Morampallibanjara	Nakiripeta	TM0210	22-02-2023	27-02-2023
299	Bhadradi Kothagudem	Burgampahad	Morampallibanjara	Krishnasagar	TM0210	28-02-2023	10-03-2023
300	Bhadradi Kothagudem	Burgampahad	Morampallibanjara	Vepalagadda	TM0211	10-03-2023	16-03-2023
301	Bhadradi Kothagudem	Burgampahad	Morampallibanjara	Tekulacheruvu	TM0210	13-03-2023	17-03-2023
302	Bhadradi Kothagudem	Burgampahad	Morampallibanjara	Sompalli	TM0211	17-03-2023	24-03-2023
303	Bhadradi Kothagudem	Burgampahad	Morampallibanjara	Musalimadugu	TM0210	20-03-2023	28-03-2023
304	Bhadradi Kothagudem	Burgampahad	Morampallibanjara	Mothepatti Nagar	TM0211	27-03-2023	03-04-2023
305	Bhadradi Kothagudem	Burgampahad	Morampallibanjara	Sarapaka	TM0210	29-03-2023	13-07-2023
306	Bhadradi Kothagudem	Burgampahad	Morampallibanjara	Thallagommuru	TM0211	04-04-2023	13-04-2023
307	Bhadradi Kothagudem	Burgampahad	Morampallibanjara	Nagineniprolu	TM0211	17-04-2023	16-05-2023
308	Bhadradi Kothagudem	Burgampahad	Morampallibanjara	Koyagudem	TM0211	17-05-2023	19-05-2023
309	Bhadradi Kothagudem	Burgampahad	Morampallibanjara	Iravendi	TM0211	22-05-2023	30-05-2023
310	Bhadradi Kothagudem	Bhadrachalam	Narasapuram	Bhadrachalam	TM0212	18-01-2023	16-08-2023
311	Bhadradi Kothagudem	Dummgudem	Narasapuram	Battigudem	TM0213	18-01-2023	19-01-2023

## BHADRADRI KOTHAGUDEM DISTRICT

312	Bhadradi Kothagudem	Dummugudem	Narasapuram	B Kothagudem	TM0213	20-01-2023	25-01-2023
313	Bhadradi Kothagudem	Dummugudem	Narasapuram	Subbaraopeta	TM0213	27-01-2023	31-01-2023
314	Bhadradi Kothagudem	Dummugudem	Narasapuram	Gangolu	TM0213	01-02-2023	02-02-2023
315	Bhadradi Kothagudem	Dummugudem	Narasapuram	Mahadevapuram	TM0213	03-02-2023	09-02-2023
316	Bhadradi Kothagudem	Dummugudem	Narasapuram	Turubaka	TM0213	10-02-2023	17-02-2023
317	Bhadradi Kothagudem	Dummugudem	Narasapuram	Narsapuram	TM0213	20-02-2023	28-02-2023
318	Bhadradi Kothagudem	Dummugudem	Narasapuram	Patha Maredubaka	TM0213	01-03-2023	03-03-2023
319	Bhadradi Kothagudem	Dummugudem	Narasapuram	Ramaraopeta	TM0213	06-03-2023	10-03-2023
320	Bhadradi Kothagudem	Dummugudem	Narasapuram	Kotha Danthem	TM0213	13-03-2023	16-03-2023
321	Bhadradi Kothagudem	Dummugudem	Narasapuram	Work Land Reguballe	TM0213	17-03-2023	24-03-2023
322	Bhadradi Kothagudem	Dummugudem	Narasapuram	Nadikudi	TM0213	27-03-2023	10-04-2023
323	Bhadradi Kothagudem	Kothagudem	Old Kothagudem	Kothagudem_Ward 1	TM0214	18-01-2023	20-01-2023
324	Bhadradi Kothagudem	Kothagudem	Old Kothagudem	Kothagudem_Ward 35	TM0214	23-01-2023	24-01-2023
325	Bhadradi Kothagudem	Kothagudem	Old Kothagudem	Kothagudem_Ward 2	TM0214	25-01-2023	27-01-2023
326	Bhadradi Kothagudem	Kothagudem	Old Kothagudem	Kothagudem_Ward 24	TM0214	30-01-2023	03-02-2023
327	Bhadradi Kothagudem	Kothagudem	Old Kothagudem	Kothagudem_Ward 3	TM0214	06-02-2023	10-02-2023
328	Bhadradi Kothagudem	Kothagudem	Old Kothagudem	Kothagudem_Ward 23	TM0214	13-02-2023	15-02-2023
329	Bhadradi Kothagudem	Kothagudem	Old Kothagudem	Kothagudem_Ward 4	TM0214	16-02-2023	24-02-2023
330	Bhadradi Kothagudem	Kothagudem	Old Kothagudem	Kothagudem_Ward 25	TM0214	27-02-2023	03-03-2023
331	Bhadradi Kothagudem	Kothagudem	Old Kothagudem	Kothagudem_Ward 5	TM0214	06-03-2023	17-03-2023
332	Bhadradi Kothagudem	Kothagudem	Old Kothagudem	Kothagudem_Ward 33	TM0214	20-03-2023	29-03-2023
333	Bhadradi Kothagudem	Kothagudem	Old Kothagudem	Kothagudem_Ward 26	TM0214	31-03-2023	12-04-2023
334	Bhadradi Kothagudem	Kothagudem	Old Kothagudem	Kothagudem_Ward 34	TM0214	13-04-2023	21-04-2023
335	Bhadradi Kothagudem	Kothagudem	Old Kothagudem	Kothagudem_Ward 36	TM0214	24-04-2023	02-05-2023
336	Bhadradi Kothagudem	Kothagudem	Old Kothagudem	Kothagudem_Ward 28	TM0214	03-05-2023	08-05-2023
337	Bhadradi Kothagudem	Kothagudem	Old Kothagudem	Kothagudem_Ward 31	TM0214	09-05-2023	16-05-2023
338	Bhadradi Kothagudem	Kothagudem	Old Kothagudem	Kothagudem_Ward 13	TM0214	17-05-2023	19-05-2023
339	Bhadradi Kothagudem	Kothagudem	Old Kothagudem	Kothagudem_Ward 14	TM0214	22-05-2023	25-05-2023
340	Bhadradi Kothagudem	Kothagudem	Old Kothagudem	Kothagudem_Ward 15	TM0214	26-05-2023	31-05-2023
341	Bhadradi Kothagudem	Kothagudem	Old Kothagudem	Kothagudem_Ward 27	TM0214	01-06-2023	02-06-2023
342	Bhadradi Kothagudem	Kothagudem	Old Kothagudem	Kothagudem_Ward 29	TM0214	05-06-2023	12-06-2023
343	Bhadradi Kothagudem	Kothagudem	Old Kothagudem	Kothagudem_Ward 30	TM0214	13-06-2023	21-06-2023
344	Bhadradi Kothagudem	Dummugudem	Parnasala	Chinna Bandirevu	TM0215	18-01-2023	27-01-2023
345	Bhadradi Kothagudem	Dummugudem	Parnasala	China Nallaballi	TM0215	30-01-2023	09-02-2023
346	Bhadradi Kothagudem	Dummugudem	Parnasala	Parnasala	TM0215	10-02-2023	27-02-2023
347	Bhadradi Kothagudem	Dummugudem	Parnasala	Pedanallaballi	TM0215	28-02-2023	09-03-2023
348	Bhadradi Kothagudem	Dummugudem	Parnasala	Gowraram	TM0215	10-03-2023	17-03-2023
349	Bhadradi Kothagudem	Dummugudem	Parnasala	Kasinagaram	TM0215	20-03-2023	27-03-2023
350	Bhadradi Kothagudem	Dummugudem	Parnasala	Paidigudem	TM0215	28-03-2023	03-04-2023
351	Bhadradi Kothagudem	Dummugudem	Parnasala	Chintaguppa	TM0215	04-04-2023	10-04-2023
352	Bhadradi Kothagudem	Cherla	Parnasala	Puligundala	TM0215	11-04-2023	13-04-2023
353	Bhadradi Kothagudem	Dammmapeta	Patwarigudem	Ankampalem	TM0216	18-01-2023	01-02-2023

## BHADRADRI KOTHAGUDEM DISTRICT

354	Bhadradi Kothagudem	Dammapeta	Patwarigudem	Arlapenta	TM0216	02-02-2023	06-02-2023
355	Bhadradi Kothagudem	Dammapeta	Patwarigudem	Balarajugudem	TM0216	07-02-2023	09-02-2023
356	Bhadradi Kothagudem	Dammapeta	Patwarigudem	Gandugulapalli	TM0216	10-02-2023	21-02-2023
357	Bhadradi Kothagudem	Dammapeta	Patwarigudem	Jaggaram	TM0216	22-02-2023	02-03-2023
358	Bhadradi Kothagudem	Dammapeta	Patwarigudem	Jamedarbanjar	TM0216	03-03-2023	13-03-2023
359	Bhadradi Kothagudem	Dammapeta	Patwarigudem	Lingalapalli	TM0216	14-03-2023	23-03-2023
360	Bhadradi Kothagudem	Dammapeta	Patwarigudem	Mondivarre	TM0216	24-03-2023	03-04-2023
361	Bhadradi Kothagudem	Dammapeta	Patwarigudem	Nagupalli	TM0216	04-04-2023	24-04-2023
362	Bhadradi Kothagudem	Dammapeta	Patwarigudem	Parkalagandi	TM0216	25-04-2023	04-05-2023
363	Bhadradi Kothagudem	Dammapeta	Patwarigudem	Patwarigudem	TM0216	05-05-2023	17-05-2023
364	Bhadradi Kothagudem	Dammapeta	Patwarigudem	Peddagollagudem	TM0216	18-05-2023	01-06-2023
365	Bhadradi Kothagudem	Dammapeta	Patwarigudem	Pusukunta	TM0216	02-06-2023	05-06-2023
366	Bhadradi Kothagudem	Dammapeta	Patwarigudem	Srirampuram	TM0216	06-06-2023	12-06-2023
367	Bhadradi Kothagudem	Chunchupalli	Penagadapa	Penagadapa	TM0217	18-01-2023	31-01-2023
368	Bhadradi Kothagudem	Chunchupalli	Penagadapa	Rampuram	TM0217	01-02-2023	02-02-2023
369	Bhadradi Kothagudem	Chunchupalli	Penagadapa	Venkatesh Khani	TM0217	03-02-2023	03-02-2023
370	Bhadradi Kothagudem	Chunchupalli	Penagadapa	Rudrampur	TM0217	06-02-2023	24-03-2023
371	Bhadradi Kothagudem	Chunchupalli	Penagadapa	Gowthampur	TM0217	27-03-2023	18-04-2023
372	Bhadradi Kothagudem	Chunchupalli	Penagadapa	Dhanbad	TM0217	19-04-2023	21-04-2023
373	Bhadradi Kothagudem	Chunchupalli	Penagadapa	4 Incline	TM0217	24-04-2023	28-04-2023
374	Bhadradi Kothagudem	Chunchupalli	Penagadapa	3-Incline	TM0217	01-05-2023	15-05-2023
375	Bhadradi Kothagudem	Sujathanagar	Penagadapa	2-Incline (Hq)	TM0217	16-05-2023	19-05-2023
376	Bhadradi Kothagudem	Chunchupalli	Penagadapa	Prashant Nagar	TM0217	22-05-2023	26-05-2023
377	Bhadradi Kothagudem	Chunchupalli	Penagadapa	Penuballi	TM0217	29-05-2023	06-06-2023
378	Bhadradi Kothagudem	Sujathanagar	Penagadapa	Gareebpeta	TM0217	07-06-2023	15-06-2023
379	Bhadradi Kothagudem	Sujathanagar	Penagadapa	Komatipalli	TM0217	16-06-2023	20-06-2023
380	Bhadradi Kothagudem	Sujathanagar	Penagadapa	Nimmalagudem	TM0217	21-06-2023	23-06-2023
381	Bhadradi Kothagudem	Pinapaka	Pinapaka	Pinapaka	TM0218	18-01-2023	24-01-2023
382	Bhadradi Kothagudem	Pinapaka	Pinapaka	Thoggudem	TM0218	25-01-2023	03-02-2023
383	Bhadradi Kothagudem	Pinapaka	Pinapaka	Botigudem	TM0218	06-02-2023	09-02-2023
384	Bhadradi Kothagudem	Pinapaka	Pinapaka	Uppaka	TM0218	10-02-2023	15-02-2023
385	Bhadradi Kothagudem	Pinapaka	Pinapaka	Potlapalli	TM0218	16-02-2023	22-02-2023
386	Bhadradi Kothagudem	Pinapaka	Pinapaka	Gaddampalli	TM0218	23-02-2023	27-02-2023
387	Bhadradi Kothagudem	Pinapaka	Pinapaka	Bhupalapatnam	TM0218	28-02-2023	08-03-2023
388	Bhadradi Kothagudem	Pinapaka	Pinapaka	Seethampeta	TM0218	09-03-2023	17-03-2023
389	Bhadradi Kothagudem	Pinapaka	Pinapaka	Seetharampuram	TM0218	20-03-2023	23-03-2023
390	Bhadradi Kothagudem	Pinapaka	Pinapaka	Pathareddipalem	TM0218	24-03-2023	03-04-2023
391	Bhadradi Kothagudem	Pinapaka	Pinapaka	Bayyaram	TM0218	04-04-2023	03-05-2023
392	Bhadradi Kothagudem	Kothagudem	Ramavaram	Kothagudem_Ward 6	TM0219	18-01-2023	30-01-2023
393	Bhadradi Kothagudem	Kothagudem	Ramavaram	Kothagudem_Ward 7	TM0219	31-01-2023	14-02-2023
394	Bhadradi Kothagudem	Kothagudem	Ramavaram	Kothagudem_Ward 8	TM0219	15-02-2023	14-03-2023
395	Bhadradi Kothagudem	Kothagudem	Ramavaram	Kothagudem_Ward 9	TM0219	15-03-2023	28-03-2023
396	Bhadradi Kothagudem	Kothagudem	Ramavaram	Kothagudem_Ward 10	TM0219	29-03-2023	10-04-2023
397	Bhadradi Kothagudem	Kothagudem	Ramavaram	Kothagudem_Ward 11	TM0219	11-04-2023	17-04-2023
398	Bhadradi Kothagudem	Kothagudem	Ramavaram	Kothagudem_Ward 12	TM0219	18-04-2023	20-04-2023
399	Bhadradi Kothagudem	Laxmidevipalli	Regalla	Regalla	TM0235	18-01-2023	24-01-2023
400	Bhadradi Kothagudem	Laxmidevipalli	Regalla	Regallapadu Thanda (Pedda Thanda)	TM0220	18-01-2023	23-01-2023
401	Bhadradi Kothagudem	Laxmidevipalli	Regalla	Dudya Thanda	TM0220	24-01-2023	27-01-2023
402	Bhadradi Kothagudem	Laxmidevipalli	Regalla	Bavoji Thanda	TM0235	25-01-2023	30-01-2023
403	Bhadradi Kothagudem	Laxmidevipalli	Regalla	Mylaram	TM0220	30-01-2023	02-02-2023
404	Bhadradi Kothagudem	Laxmidevipalli	Regalla	Hariya Thanda	TM0235	31-01-2023	01-02-2023
405	Bhadradi Kothagudem	Laxmidevipalli	Regalla	Gattumalla	TM0235	02-02-2023	07-02-2023
406	Bhadradi Kothagudem	Laxmidevipalli	Regalla	Bangaru Chelka	TM0220	03-02-2023	08-02-2023
407	Bhadradi Kothagudem	Laxmidevipalli	Regalla	Punukuduchelka	TM0235	08-02-2023	09-02-2023
408	Bhadradi Kothagudem	Laxmidevipalli	Regalla	Laxmipuram	TM0220	09-02-2023	14-02-2023
409	Bhadradi Kothagudem	Laxmidevipalli	Regalla	Bojjalagudem	TM0235	10-02-2023	14-02-2023
410	Bhadradi Kothagudem	Laxmidevipalli	Regalla	Kotha Chinthakunta	TM0220	15-02-2023	17-02-2023
411	Bhadradi Kothagudem	Laxmidevipalli	Regalla	Prashantnagar	TM0235	15-02-2023	28-02-2023
412	Bhadradi Kothagudem	Laxmidevipalli	Regalla	Laxmidevipalli	TM0220	20-02-2023	03-03-2023

## BHADRADRI KOTHAGUDEM DISTRICT

413	Bhadradi Kothagudem	Laxmidevipalli	Regalla	Hamali Colony	TM0235	01-03-2023	03-03-2023
414	Bhadradi Kothagudem	Laxmidevipalli	Regalla	Sativarigudem	TM0235	06-03-2023	08-03-2023
415	Bhadradi Kothagudem	Laxmidevipalli	Regalla	Lothuvagu	TM0220	06-03-2023	16-03-2023
416	Bhadradi Kothagudem	Laxmidevipalli	Regalla	Srinagar Colony	TM0235	09-03-2023	04-04-2023
417	Bhadradi Kothagudem	Laxmidevipalli	Regalla	Chatakonda (R)	TM0220	17-03-2023	03-04-2023
418	Bhadradi Kothagudem	Laxmidevipalli	Regalla	Sanjay Nagar	TM0220	04-04-2023	18-04-2023
419	Bhadradi Kothagudem	Laxmidevipalli	Regalla	Ashok Nagar Colony	TM0235	06-04-2023	20-04-2023
420	Bhadradi Kothagudem	Laxmidevipalli	Regalla	Edurugadda	TM0220	19-04-2023	21-04-2023
421	Bhadradi Kothagudem	Laxmidevipalli	Regalla	Hemachandrapuram	TM0235	21-04-2023	02-05-2023
422	Bhadradi Kothagudem	Laxmidevipalli	Regalla	Karukonda	TM0220	24-04-2023	27-04-2023
423	Bhadradi Kothagudem	Laxmidevipalli	Regalla	Gaddigutta	TM0220	28-04-2023	02-05-2023
424	Bhadradi Kothagudem	Laxmidevipalli	Regalla	Telaga Ramavaram	TM0235	03-05-2023	05-05-2023
425	Bhadradi Kothagudem	Laxmidevipalli	Regalla	Anisetipalli	TM0220	03-05-2023	15-05-2023
426	Bhadradi Kothagudem	Laxmidevipalli	Regalla	Lal Thanda	TM0235	08-05-2023	09-05-2023
427	Bhadradi Kothagudem	Laxmidevipalli	Regalla	Seetharampuram	TM0235	10-05-2023	16-05-2023
428	Bhadradi Kothagudem	Laxmidevipalli	Regalla	Vepalagadda	TM0220	16-05-2023	18-05-2023
429	Bhadradi Kothagudem	Laxmidevipalli	Regalla	Sheshagiri Nagar	TM0235	17-05-2023	19-05-2023
430	Bhadradi Kothagudem	Yellandu	Rompedu	Balaji Nagar	TM0221	18-01-2023	03-02-2023
431	Bhadradi Kothagudem	Yellandu	Rompedu	Yellandu Ward 19	TM0222	18-01-2023	24-01-2023
432	Bhadradi Kothagudem	Yellandu	Rompedu	Yellandu Ward 7	TM0223	18-01-2023	24-01-2023
433	Bhadradi Kothagudem	Yellandu	Rompedu	Yellandu Ward 3	TM0222	25-01-2023	02-02-2023
434	Bhadradi Kothagudem	Yellandu	Rompedu	Yellandu Ward 16	TM0223	25-01-2023	01-02-2023
435	Bhadradi Kothagudem	Yellandu	Rompedu	Yellandu Ward 8	TM0223	02-02-2023	08-02-2023
436	Bhadradi Kothagudem	Yellandu	Rompedu	Yellandu Ward 2	TM0222	03-02-2023	10-02-2023
437	Bhadradi Kothagudem	Yellandu	Rompedu	Bojjaigudem	TM0221	06-02-2023	23-02-2023
438	Bhadradi Kothagudem	Yellandu	Rompedu	Yellandu Ward 9	TM0223	09-02-2023	15-02-2023
439	Bhadradi Kothagudem	Yellandu	Rompedu	Yellandu Ward 1	TM0222	13-02-2023	20-02-2023
440	Bhadradi Kothagudem	Yellandu	Rompedu	Yellandu Ward 10	TM0223	16-02-2023	21-02-2023
441	Bhadradi Kothagudem	Yellandu	Rompedu	Yellandu Ward 20	TM0222	21-02-2023	27-02-2023
442	Bhadradi Kothagudem	Yellandu	Rompedu	Yellandu Ward 12	TM0223	22-02-2023	27-02-2023
443	Bhadradi Kothagudem	Yellandu	Rompedu	Sudimalla	TM0221	24-02-2023	13-03-2023
444	Bhadradi Kothagudem	Yellandu	Rompedu	Yellandu Ward 13	TM0223	28-02-2023	06-03-2023
445	Bhadradi Kothagudem	Yellandu	Rompedu	Yellandu Ward 21	TM0222	28-02-2023	03-03-2023
446	Bhadradi Kothagudem	Yellandu	Rompedu	Yellandu Ward 22	TM0222	06-03-2023	13-03-2023
447	Bhadradi Kothagudem	Yellandu	Rompedu	Yellandu Ward 15	TM0223	08-03-2023	15-03-2023
448	Bhadradi Kothagudem	Yellandu	Rompedu	Yellandu Ward 23	TM0222	14-03-2023	20-03-2023
449	Bhadradi Kothagudem	Yellandu	Rompedu	Pubelly	TM0221	14-03-2023	16-03-2023
450	Bhadradi Kothagudem	Yellandu	Rompedu	Yellandu Ward 14	TM0223	16-03-2023	23-03-2023
451	Bhadradi Kothagudem	Yellandu	Rompedu	Subashnagar	TM0221	17-03-2023	18-04-2023
452	Bhadradi Kothagudem	Yellandu	Rompedu	Yellandu Ward 24	TM0222	21-03-2023	28-03-2023
453	Bhadradi Kothagudem	Yellandu	Rompedu	Yellandu Ward 11	TM0223	24-03-2023	31-03-2023
454	Bhadradi Kothagudem	Yellandu	Rompedu	Yellandu Ward 4	TM0222	29-03-2023	10-04-2023
455	Bhadradi Kothagudem	Yellandu	Rompedu	Yellandu Ward 17	TM0223	03-04-2023	11-04-2023
456	Bhadradi Kothagudem	Yellandu	Rompedu	Yellandu Ward 5	TM0222	11-04-2023	19-04-2023
457	Bhadradi Kothagudem	Yellandu	Rompedu	Yellandu Ward 18	TM0223	12-04-2023	19-04-2023
458	Bhadradi Kothagudem	Yellandu	Rompedu	Raghoboinagudem	TM0221	19-04-2023	02-05-2023
459	Bhadradi Kothagudem	Yellandu	Rompedu	Yellandu Ward 6	TM0222	20-04-2023	25-04-2023
460	Bhadradi Kothagudem	Yellandu	Rompedu	Mamidigudem	TM0222	26-04-2023	03-05-2023
461	Bhadradi Kothagudem	Yellandu	Rompedu	Indira Nagar	TM0221	03-05-2023	17-05-2023
462	Bhadradi Kothagudem	Yellandu	Rompedu	Rompaid	TM0222	04-05-2023	16-05-2023
463	Bhadradi Kothagudem	Yellandu	Rompedu	Mittappally	TM0221	18-05-2023	23-05-2023
464	Bhadradi Kothagudem	Yellandu	Rompedu	Thilak Nagar	TM0221	24-05-2023	02-06-2023
465	Bhadradi Kothagudem	Yellandu	Rompedu	Vijaylaxmi Nagar	TM0221	05-06-2023	14-06-2023
466	Bhadradi Kothagudem	Yellandu	Rompedu	Mondithogu	TM0221	15-06-2023	23-06-2023
467	Bhadradi Kothagudem	Kothagudem	Safaibasthi	Kothagudem_Ward 18	TM0224	18-01-2023	27-01-2023
468	Bhadradi Kothagudem	Kothagudem	Safaibasthi	Kothagudem_Ward 22	TM0224	30-01-2023	30-01-2023
469	Bhadradi Kothagudem	Kothagudem	Safaibasthi	Kothagudem_Ward 21	TM0224	31-01-2023	09-02-2023
470	Bhadradi Kothagudem	Kothagudem	Safaibasthi	Kothagudem_Ward 32	TM0224	10-02-2023	17-02-2023

## BHADRADRI KOTHAGUDEM DISTRICT

BHADRADRI KOTHAGUDEM

471	Bhadradi Kothagudem	Kothagudem	Safaibasthi	Kothagudem_Ward 19	TM0224	20-02-2023	22-02-2023
472	Bhadradi Kothagudem	Kothagudem	Safaibasthi	Kothagudem_Ward 20	TM0224	23-02-2023	03-03-2023
473	Bhadradi Kothagudem	Kothagudem	Safaibasthi	Kothagudem_Ward 16	TM0224	06-03-2023	15-03-2023
474	Bhadradi Kothagudem	Kothagudem	Safaibasthi	Kothagudem_Ward 17	TM0224	16-03-2023	21-03-2023
475	Bhadradi Kothagudem	Cherla	Satyanarayana puram	Peddipalli	TM0225	18-01-2023	19-01-2023
476	Bhadradi Kothagudem	Cherla	Satyanarayana puram	Gommugudem	TM0225	20-01-2023	25-01-2023
477	Bhadradi Kothagudem	Cherla	Satyanarayana puram	Bodenelli	TM0225	27-01-2023	01-02-2023
478	Bhadradi Kothagudem	Cherla	Satyanarayana puram	Kurnapally	TM0225	02-02-2023	08-02-2023
479	Bhadradi Kothagudem	Cherla	Satyanarayana puram	Kaliveru Z	TM0225	09-02-2023	16-02-2023
480	Bhadradi Kothagudem	Cherla	Satyanarayana puram	R.Kothagudem	TM0225	17-02-2023	02-03-2023
481	Bhadradi Kothagudem	Cherla	Satyanarayana puram	Satyanarayanapuram	TM0225	03-03-2023	10-03-2023
482	Bhadradi Kothagudem	Cherla	Satyanarayana puram	Tegada	TM0225	13-03-2023	23-03-2023
483	Bhadradi Kothagudem	Cherla	Satyanarayana puram	Chinnamidisileru	TM0225	24-03-2023	03-04-2023
484	Bhadradi Kothagudem	Cherla	Satyanarayana puram	Pedamidisileru	TM0225	04-04-2023	17-04-2023
485	Bhadradi Kothagudem	Cherla	Satyanarayana puram	Tippapuram	TM0225	18-04-2023	28-04-2023
486	Bhadradi Kothagudem	Cherla	Satyanarayana puram	Kudunuru	TM0225	01-05-2023	08-05-2023
487	Bhadradi Kothagudem	Cherla	Satyanarayana puram	Devarapalli	TM0225	09-05-2023	18-05-2023
488	Bhadradi Kothagudem	Palvancha	Shekarambanajra	Palwancha_Ward 1	TM0227	18-01-2023	01-02-2023
489	Bhadradi Kothagudem	Palvancha	Shekarambanajra	Palwancha_Ward 2	TM0233	18-01-2023	08-02-2023
490	Bhadradi Kothagudem	Palvancha	Shekarambanajra	Palwancha_Ward 3	TM0226	18-01-2023	10-02-2023
491	Bhadradi Kothagudem	Palvancha	Shekarambanajra	Palwancha_Ward 5	TM0227	02-02-2023	23-02-2023
492	Bhadradi Kothagudem	Palvancha	Shekarambanajra	Palwancha_Ward 4	TM0233	09-02-2023	22-02-2023
493	Bhadradi Kothagudem	Palvancha	Shekarambanajra	Palwancha_Ward 7	TM0226	13-02-2023	01-03-2023
494	Bhadradi Kothagudem	Palvancha	Shekarambanajra	Palwancha_Ward 9	TM0233	23-02-2023	06-03-2023
495	Bhadradi Kothagudem	Palvancha	Shekarambanajra	Palwancha_Ward 10	TM0227	24-02-2023	02-03-2023
496	Bhadradi Kothagudem	Palvancha	Shekarambanajra	Palwancha_Ward 11	TM0226	02-03-2023	10-03-2023
497	Bhadradi Kothagudem	Palvancha	Shekarambanajra	Palwancha_Ward 17	TM0227	03-03-2023	17-03-2023
498	Bhadradi Kothagudem	Palvancha	Shekarambanajra	Palwancha_Ward 16	TM0233	08-03-2023	23-03-2023
499	Bhadradi Kothagudem	Palvancha	Shekarambanajra	Palwancha_Ward 12	TM0226	13-03-2023	28-03-2023
500	Bhadradi Kothagudem	Palvancha	Shekarambanajra	Palwancha_Ward 23	TM0227	20-03-2023	31-03-2023
501	Bhadradi Kothagudem	Palvancha	Shekarambanajra	Palwancha_Ward 22	TM0233	24-03-2023	31-03-2023

## BHADRADRI KOTHAGUDEM DISTRICT

502	Bhadradi Kothagudem	Palvancha	Shekarambanajra	Palwancha_Ward 19	TM0226	29-03-2023	06-04-2023
503	Bhadradi Kothagudem	Palvancha	Shekarambanajra	Palwancha_Ward 18	TM0233	03-04-2023	11-04-2023
504	Bhadradi Kothagudem	Palvancha	Shekarambanajra	Palwancha_Ward 20	TM0227	03-04-2023	11-04-2023
505	Bhadradi Kothagudem	Palvancha	Shekarambanajra	Palwancha_Ward 24	TM0226	10-04-2023	17-04-2023
506	Bhadradi Kothagudem	Palvancha	Shekarambanajra	Palwancha_Ward 21	TM0226	18-04-2023	08-05-2023
507	Bhadradi Kothagudem	Sujathanagar	Sujathanagar	Seetampeta	TM0229	18-01-2023	23-01-2023
508	Bhadradi Kothagudem	Sujathanagar	Sujathanagar	Raghavapuram	TM0234	18-01-2023	25-01-2023
509	Bhadradi Kothagudem	Sujathanagar	Sujathanagar	Sarvaram	TM0228	18-01-2023	06-02-2023
510	Bhadradi Kothagudem	Sujathanagar	Sujathanagar	Malagudem (Mala Banjara)	TM0229	24-01-2023	25-01-2023
511	Bhadradi Kothagudem	Sujathanagar	Sujathanagar	Nayakulagudem	TM0234	27-01-2023	03-02-2023
512	Bhadradi Kothagudem	Sujathanagar	Sujathanagar	Mangapeta	TM0229	27-01-2023	30-01-2023
513	Bhadradi Kothagudem	Sujathanagar	Sujathanagar	Old Anjanapuram	TM0229	31-01-2023	06-02-2023
514	Bhadradi Kothagudem	Sujathanagar	Sujathanagar	Laxmidevipally	TM0234	06-02-2023	08-02-2023
515	Bhadradi Kothagudem	Chunchupalli	Sujathanagar	Ambedkar Nagar	TM0229	07-02-2023	08-02-2023
516	Bhadradi Kothagudem	Sujathanagar	Sujathanagar	Sujathanagar	TM0228	07-02-2023	06-03-2023
517	Bhadradi Kothagudem	Chunchupalli	Sujathanagar	Nk Nagar (Badavath Thanda)	TM0229	09-02-2023	16-02-2023
518	Bhadradi Kothagudem	Sujathanagar	Sujathanagar	Jamlathanda (Bethampudi)	TM0234	09-02-2023	10-02-2023
519	Bhadradi Kothagudem	Sujathanagar	Sujathanagar	Narsimhasagar	TM0234	13-02-2023	20-02-2023
520	Bhadradi Kothagudem	Chunchupalli	Sujathanagar	Ramanjaneya Colony	TM0229	17-02-2023	09-03-2023
521	Bhadradi Kothagudem	Chunchupalli	Sujathanagar	Chunchupalle	TM0234	21-02-2023	27-02-2023
522	Bhadradi Kothagudem	Chunchupalli	Sujathanagar	Vidyanagar Colony	TM0234	28-02-2023	21-03-2023
523	Bhadradi Kothagudem	Sujathanagar	Sujathanagar	Seethampeta Banjara	TM0228	08-03-2023	16-03-2023
524	Bhadradi Kothagudem	Sujathanagar	Sujathanagar	Singabhupalem	TM0228	17-03-2023	28-03-2023
525	Bhadradi Kothagudem	Chunchupalli	Sujathanagar	Venkateshwara Colony	TM0234	23-03-2023	27-03-2023
526	Bhadradi Kothagudem	Sujathanagar	Sujathanagar	Bethampudi Rly Station	TM0228	29-03-2023	06-04-2023
527	Bhadradi Kothagudem	Sujathanagar	Sujathanagar	New Anjanapuram	TM0228	10-04-2023	13-04-2023
528	Bhadradi Kothagudem	Sujathanagar	Sujathanagar	Koyagudem	TM0228	17-04-2023	20-04-2023
529	Bhadradi Kothagudem	Chunchupalli	Sujathanagar	Nanda Thanda	TM0228	21-04-2023	01-05-2023
530	Bhadradi Kothagudem	Chunchupalli	Sujathanagar	Babu Camp	TM0228	02-05-2023	06-06-2023
531	Bhadradi Kothagudem	Tekulapally	Sulhanagar	Mutyalampadu X Road	TM0230	18-01-2023	24-01-2023
532	Bhadradi Kothagudem	Tekulapally	Sulhanagar	Sulanagar	TM0231	18-01-2023	27-01-2023
533	Bhadradi Kothagudem	Tekulapally	Sulhanagar	Pegallapadu	TM0230	25-01-2023	03-02-2023
534	Bhadradi Kothagudem	Tekulapally	Sulhanagar	Ram Puram	TM0231	30-01-2023	03-02-2023
535	Bhadradi Kothagudem	Tekulapally	Sulhanagar	Golya Thanda	TM0231	06-02-2023	10-02-2023
536	Bhadradi Kothagudem	Tekulapally	Sulhanagar	Chintal Lanka	TM0230	06-02-2023	08-02-2023
537	Bhadradi Kothagudem	Tekulapally	Sulhanagar	Tekulapalli	TM0230	09-02-2023	22-02-2023
538	Bhadradi Kothagudem	Tekulapally	Sulhanagar	Bethampudi	TM0231	13-02-2023	23-02-2023
539	Bhadradi Kothagudem	Tekulapally	Sulhanagar	9th Mile Thanda	TM0230	23-02-2023	08-03-2023
540	Bhadradi Kothagudem	Tekulapally	Sulhanagar	Rollapadu	TM0231	24-02-2023	28-02-2023
541	Bhadradi Kothagudem	Tekulapally	Sulhanagar	Billudu Thanda	TM0231	01-03-2023	06-03-2023
542	Bhadradi Kothagudem	Tekulapally	Sulhanagar	Gollapalle	TM0231	08-03-2023	15-03-2023
543	Bhadradi Kothagudem	Tekulapally	Sulhanagar	Koyagudem	TM0230	09-03-2023	28-03-2023
544	Bhadradi Kothagudem	Tekulapally	Sulhanagar	Chandru Thanda	TM0231	16-03-2023	20-03-2023
545	Bhadradi Kothagudem	Tekulapally	Sulhanagar	Chinthoni Chelka	TM0231	21-03-2023	27-03-2023
546	Bhadradi Kothagudem	Tekulapally	Sulhanagar	Lachagudem	TM0231	28-03-2023	03-04-2023
547	Bhadradi Kothagudem	Tekulapally	Sulhanagar	Thadikalapudi	TM0230	29-03-2023	18-04-2023
548	Bhadradi Kothagudem	Tekulapally	Sulhanagar	Thavurya Thanda	TM0231	04-04-2023	12-04-2023
549	Bhadradi Kothagudem	Tekulapally	Sulhanagar	Kuntala	TM0231	13-04-2023	18-04-2023
550	Bhadradi Kothagudem	Tekulapally	Sulhanagar	Gangaram	TM0230	19-04-2023	24-04-2023
551	Bhadradi Kothagudem	Tekulapally	Sulhanagar	Yerragudem	TM0231	19-04-2023	21-04-2023
552	Bhadradi Kothagudem	Tekulapally	Sulhanagar	Ramchandrunipeta	TM0231	24-04-2023	27-04-2023
553	Bhadradi Kothagudem	Tekulapally	Sulhanagar	Dasu Thanda	TM0230	25-04-2023	04-05-2023

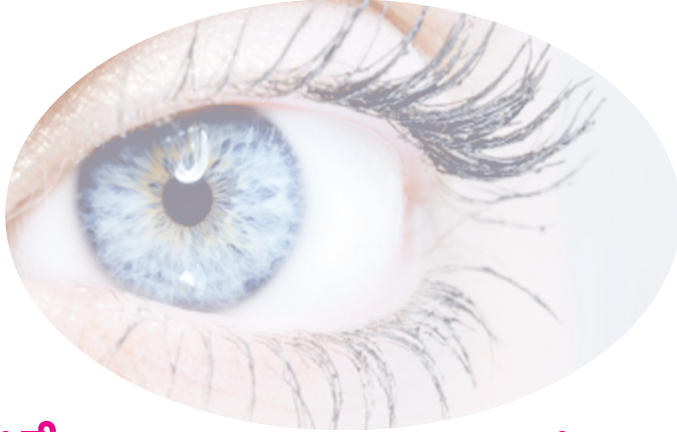


## BHADRADRI KOTHAGUDEM DISTRICT

BHADRADRI KOTHAGUDEM

554	Bhadradi Kothagudem	Tekulapally	Sulhanagar	Barlagudem	TM0231	28-04-2023	02-05-2023
555	Bhadradi Kothagudem	Tekulapally	Sulhanagar	Chukkala Bodu	TM0231	03-05-2023	05-05-2023
556	Bhadradi Kothagudem	Tekulapally	Sulhanagar	Mellamadugu	TM0230	05-05-2023	09-05-2023
557	Bhadradi Kothagudem	Tekulapally	Sulhanagar	Kotha Thanda (G)	TM0231	08-05-2023	12-05-2023
558	Bhadradi Kothagudem	Tekulapally	Sulhanagar	Kistaram	TM0230	10-05-2023	16-05-2023
559	Bhadradi Kothagudem	Tekulapally	Sulhanagar	Koppurai	TM0231	15-05-2023	24-05-2023
560	Bhadradi Kothagudem	Tekulapally	Sulhanagar	Kotha Thanda (P)	TM0230	17-05-2023	23-05-2023
561	Bhadradi Kothagudem	Tekulapally	Sulhanagar	Boddu Thanda	TM0230	24-05-2023	01-06-2023
562	Bhadradi Kothagudem	Tekulapally	Sulhanagar	Madras Thanda	TM0231	25-05-2023	31-05-2023
563	Bhadradi Kothagudem	Tekulapally	Sulhanagar	Sambunigudem	TM0231	01-06-2023	06-06-2023
564	Bhadradi Kothagudem	Tekulapally	Sulhanagar	Petram Chelka	TM0230	02-06-2023	06-06-2023
565	Bhadradi Kothagudem	Tekulapally	Sulhanagar	Mokkampadu	TM0230	07-06-2023	08-06-2023
566	Bhadradi Kothagudem	Tekulapally	Sulhanagar	Bodu	TM0230	09-06-2023	19-06-2023
567	Bhadradi Kothagudem	Palvancha	Ulvanoor	Vulvanoor	TM0232	18-01-2023	24-01-2023
568	Bhadradi Kothagudem	Palvancha	Ulvanoor	Laxmidevipalli (L)	TM0232	25-01-2023	31-01-2023
569	Bhadradi Kothagudem	Palvancha	Ulvanoor	Mallaram	TM0232	01-02-2023	02-02-2023
570	Bhadradi Kothagudem	Palvancha	Ulvanoor	Banjara	TM0232	03-02-2023	06-02-2023
571	Bhadradi Kothagudem	Palvancha	Ulvanoor	Regulagudem	TM0232	07-02-2023	09-02-2023
572	Bhadradi Kothagudem	Palvancha	Ulvanoor	Chandralagudem	TM0232	10-02-2023	13-02-2023
573	Bhadradi Kothagudem	Palvancha	Ulvanoor	Mandarikalapadu	TM0232	14-02-2023	15-02-2023
574	Bhadradi Kothagudem	Palvancha	Ulvanoor	Sathyarayanapuram	TM0232	16-02-2023	21-02-2023
575	Bhadradi Kothagudem	Palvancha	Ulvanoor	Karegattu	TM0232	22-02-2023	24-02-2023
576	Bhadradi Kothagudem	Palvancha	Ulvanoor	Prabhat Nagar	TM0232	27-02-2023	03-03-2023
577	Bhadradi Kothagudem	Palvancha	Ulvanoor	Yanambailu	TM0232	06-03-2023	10-03-2023
578	Bhadradi Kothagudem	Palvancha	Ulvanoor	Kinnerasani	TM0232	13-03-2023	16-03-2023
579	Bhadradi Kothagudem	Palvancha	Ulvanoor	Kodipunjulavagu	TM0232	17-03-2023	23-03-2023
580	Bhadradi Kothagudem	Palvancha	Ulvanoor	Punukula	TM0232	24-03-2023	03-04-2023
581	Bhadradi Kothagudem	Palvancha	Ulvanoor	Payakari Yanambylu	TM0232	04-04-2023	11-04-2023
582	Bhadradi Kothagudem	Palvancha	Ulvanoor	Pandurangapuram	TM0232	12-04-2023	20-04-2023
583	Bhadradi Kothagudem	Palvancha	Ulvanoor	Pandurangapuram Thanda	TM0232	21-04-2023	26-04-2023
584	Bhadradi Kothagudem	Palvancha	Ulvanoor	Thaviselagudem Kothapeta	TM0232	27-04-2023	03-05-2023
585	Bhadradi Kothagudem	Palvancha	Ulvanoor	Yellandulapadu Thanda	TM0232	04-05-2023	08-05-2023

జీవిస్తూ రక్తదానం  
మరణిస్తూ నేత్రదానం



**‘సర్వేంద్రియానాం నయనం ప్రధానం’**

ఆరోగ్య, వైద్య మరియు కుటుంబ సంక్షేమ శాఖ, తెలంగాణ ప్రభుత్వం